

SPRING/SUMMER
2018
APPAREL & GIFTS
DEALER CATALOG
INTERNATIONAL



Indian
MOTORCYCLE



WELCOME TO THE PREVIEW OF OUR SPRING/SUMMER 2018 APPAREL & GIFT COLLECTION

This guide has been designed to give you detailed insight into the products we have developed for the season with further new product introductions in our motorcycle rider wear, casualwear and gift categories.

THE BASICS

The Spring/Summer 2018 range introduces more than 50 new products, including a wide collection of helmets, new riding jackets and gloves and an extended range of casualwear which includes cool graphic tees.

In order to grow Indian Motorcycle® as a brand, it is important that our apparel offerings are consistent with our brand. One of the most crucial steps in this process is to ensure that everything with an Indian Motorcycle® name, logo, brand asset, or historical piece that is in the marketplace has been approved by our Licensing and Apparel Team.

DEALER T-SHIRT & GIFT CUSTOMIZATION PROGRAM

Only authorized Indian Motorcycle® apparel & gifts can be retailed in our dealer network. This helps to ensure the quality of products in the marketplace is consistent with our brand standards.

As an Indian Motorcycle® dealer you and your dealership serve as brand representatives. It is crucial that your store carry, promote and sell official Indian Motorcycle® merchandise.

To help with the process you have the two vendors who are authorized to offer this service in Blueprint Apparel and Tom's T's. Both offer name drop or full custom options to the Indian Motorcycle® dealer network and are adding long sleeve tee options to their line-up. Blueprint Apparel also offers custom gift options as well as children's tees and Indian Motorcycle Racing custom tees. See page 66-67 for further information.

OFFICIAL LICENSED PRODUCTS

Indian Motorcycle® continues to develop its range of licensed products through high quality vendors. This guide will give you a more comprehensive look at the products offered by some of our partners that are available to the dealer network. These partners offer a range of products that you can order from Indian Motorcycle® directly and take advantage of additional revenue and margin opportunities.

Signs: AMI Graphics - visit www.polarisdealersigns.com
Signs: Meissenburg Design - see page 86
Jewelry: King Baby Studio - see page 94
Custom Dealer Tees: Blueprint Apparel - see page 67
Custom Dealer Tees: Tom's T's - see page 66
Jack Daniel's® Apparel: Image Seller - visit www.jdindianmerchandise.com
Games Room Range: Holland Bar Stool - contact ldolendi@hollandbarstool.com
Indian® Ride On: Giggo Toys - contact dbrobmann@giggotoys.com

Visit the pages listed above for further details of what these partners offer and how to order.

THE APPAREL BUSINESS

The apparel business is crucial to the success of building the Indian Motorcycle® brand and promoting the bikes we sell. We estimate that the average Indian Motorcycle® dealership will sell \$900 per new motorcycle sale of which \$400 will come at the time of the sale of the bike and an additional \$500 will come over the counter.

STOCKING FOR THE SEASON

It can be difficult to understand what sizes to stock and how to display apparel effectively within your dealership. Indian Motorcycle® offers sizing up to 5X men's and 3W women's. To determine a typical size run needed for a collection of jackets you should look at your retail velocity and demographic. Below is a snap shot of sizing typically needed for one part number of a leather jacket, textile jacket, or casualwear based on the size of your dealership.

CASUALWEAR		
	Men's	Women's
S		1
M	1	2
L	2	2
XL	2	1
2X	1	

JACKETS		
	Men's	Women's
S		1
M	1	2
L	2	2
XL	2	1
2X	1	

Here are some tips on how to get the best out of your upcoming order and ensure you have the right mix of products for the Spring/Summer 2018 season. What you select will have a direct effect on your season's apparel sales performance, including profitability and customer satisfaction. The following questions will help you form your order.

Also consider your online business. The Polaris® ICE system is designed to support dealer online sales for apparel and gift items. Ensure you regularly check for available orders you can fulfil via your stock. Online sales should account for at least 10-15% of your total apparel & gift revenue. This will increase during peak periods such as holidays and the start of the riding season.

FINAL SEASON // FINAL SEASON

Products marked Final Season will only be available while stock lasts and will become obsolete after Spring/Summer 2018. We recommend that these lines are cleared out of your stock as soon as possible. By clearing these lines sooner it helps to reduce your stock obsolescence and means you can turn the stock into revenue, allowing you to reinvest in current selling lines. Display this stock as a mark-down line in your store to clear it through at the earliest opportunity. The following lines are in Final Season and should be cleared:

Hedstrom Jacket, P. 7
Scout® Logo Tee, Black, P. 44
Scout® Logo Tee, Red, P. 44
1901 Motor Oil Tee, P. 45
1901 World's Fastest Tee, P. 45
1901 Grand National Tee, P. 45
1901 Factory Team Tee, P. 45
Black Logo Tank, P. 49
Sleeveless Logo Tee, P. 49
IMC 16 Black Tee, P. 49
Thunder Stroke® Tee, Black, P. 49
World Tee, P. 50
183MPH LS Tee, P. 51
UV Protect LS Tee, P. 51
Quarter Zip Fleece, P. 52
Women's Zip Top, Gray, P. 59

Women's Original Tee, P. 59
Women's Headdress Tank, P. 60
Women's Icon Tank, Marl Gray, P. 60
Women's Star Tee, P. 63
Women's Zip Thru, P. 64
5-Panel Scout® Hat, P. 71
Quilt Stitch Hat, P. 71
Gray Logo Hat, P. 71
Indian Motorcycle® Posters, P. 82
Windshield Decal, P. 88
IMC Rubber Key Ring, P. 91
Scout® Patch, Red, P. 92
Headdress Patch, Red, P. 92
IMC Brown Leather Patch, P. 93
IMC Leather Patch, P. 93
Thunder Stroke® Patch, P. 93

BEFORE YOU ORDER

Consider what budget you have for this collection.

• How many prongs, shelves and rails do you have to fill?

• Remember that your retail space needs to work to its maximum potential, so do not under-fill your apparel display. Also, do not over-fill your space. It is better to focus your buying on fewer styles and carry these in greater stock depth, so you have sizes available in store for customers to purchase.

• Keep in mind that this range arrival coincides with the 2018 riding season so you will need to stock the right amount of product to take advantage of this busy time of year for apparel and gift sales, both online and in-store. Make sure the apparel range introduction is part of your sales process when selling new vehicles.

• What stock do you have that is being deleted from the previous collection, i.e. what will be obsolete from your current inventory given the new collection?

• Consider your demand via your online stores and plan for additional demand from any events in your calendar, e.g. Open Houses.

• Don't be too conservative. If you believe in a product you will sell it. How will you know if it will sell if you never present anything new?

• Buying what you personally like is important; you need to believe in the product to be able to sell it to your customers.

• It is also critical to think about your customers and who they are. Don't make your buying so personal that you exclude the groups of customers you have. Make sure you have something for every rider/buyer that comes into your dealership.

If you don't stock what your customers want they will only go elsewhere to buy their product!

SETTING YOUR SHOWROOM

Selecting your collection and placing your order is just the first step of what you need to do. The next step you need to consider is your sales plan:

• Having the right products will allow you to maximize your sales to the new customer groups and existing loyal owners.

• Think about the key new products you have ordered and how you will be able to make the most of their appearance in your stores.

• Have you thought about how you will inform customers that the products have arrived?

• What about a launch event that you can use to get your customers in the buying mood?

• Update your website and inform visitors that products are now available.

• Make sure all members of staff are aware that new products have arrived and make sure you have refreshed them in the key styles for the season.

• Challenge yourself and your colleagues to build sales by selling one more product for every transaction made. This will have a massive effect on your profitability, even if it is an additional low value sale per customer.

• Have a varied and engaging calendar of things you will do during the season. Don't just wait for customers to enter your stores. Be proactive in getting them to visit you, either in person or online.

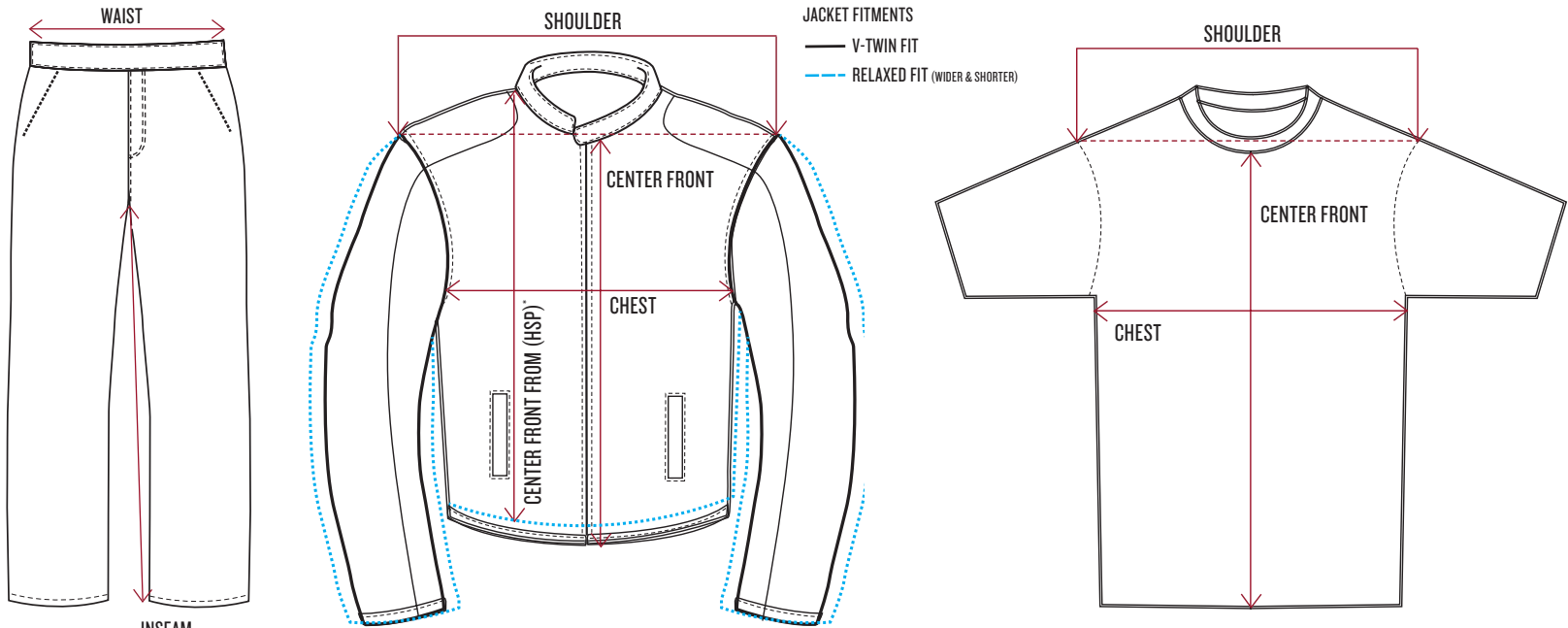
• Consider what you have in store at the moment. Look at what has worked and sell this stock through. For products that have been slow, react sooner rather than later. Sell out of this obsolete stock and make sure your store is ready for new products to arrive.

PART NUMBER SIZE GUIDE- APPAREL*																	
XS	S	M	L	LT	XL	XLT	2XL	2XLT	3XL	3XLT	4XL	5XL	1W	2W	3W		
01	02	03	06	08	09	11	12	13	14	20	15	16	17	18	19		

*Based on the size you are ordering, add the above number to the end of the item's part number. LT, XLT, 2XLT, 3XLT are tall sizes.

PART NUMBER SIZE GUIDE- FOOTWEAR*										
Size	05	06	07	08	09	10	11	12	13	
Part #	05	06	07	08	09	10	11	12	13	

*Based on the size you are ordering, add the above number to the end of the item's part number.



MEN'S V-TWIN FIT JACKETS												
	CHEST		SHOULDER		LEATHER CENTER FRONT		TEXTILE CENTER FRONT		SPIRIT JKT CENTER FRONT		SPRINGFIELD CENTER FRONT	
SIZE	IN	CM	IN	CM	IN	CM	IN	CM	IN	CM	IN	CM
S	43.3 - 44.9	110 - 114	20.5	52	21.5	55	22	56	24	61	22	56
M	46.5 - 48	118 - 122	20.9	53	22	56	22.5	57	24.4	62	22.5	57
L	49.6 - 51.2	126 - 130	21.3	54	22.5	57	23	58	24.8	63	23	58
L-TALL	49.6 - 51.2	126 - 130	21.5	54.5	-	-	-	-	26.4	67	24.4	62
XL	53.5 - 55.1	136 - 140	22	56	23	59	23.5	60	25.6	65	23.5	60
XL-TALL	53.5 - 55.1	136 - 140	22.2	56.5	-	-	-	-	27.2	69	25.2	64
2XL	57.5 - 59	146 - 150	22.5	58	24	61	24.4	62	26.4	67	24.4	62
2XL-TALL	57.5 - 59	146 - 150	23	58.5	-	-	-	-	27.9	71	26	66
3XL	61.4 - 63	156 - 160	23.5	60	24.5	63	25.2	64	27.2	69	25.2	64
3XL-TALL	61.4 - 63	156 - 160	24	60.5	-	-	-	-	28.7	73	26.8	68
4XL	65.4 - 66.9	166 - 170	24.4	62	25.6	65	26	66	27.9	71	26	66
5XL	69.3 - 70.9	176 - 180	25.2	64	26.5	67	26.8	68	28.7	73	26.8	68

Tall sizes available on Spirit Jacket & Springfield Mesh Jacket for sizes L-3XL. Sleeve length & body length increase by 4cm.

MEN'S V-TWIN FIT VESTS						
SIZE	CHEST		SHOULDER		CENTER FRONT	
	IN	CM	IN	CM	IN	CM
S	42	106	15	38	13.2	33.5
M	45	114	15.4	39	14.4	36.5
L	48	122	15.7	40	14.8	37.5
XL	52	132	16.5	42	15.6	39.5
2XL	56	142	17.3	44	16.3	41.5
3XL	60	152	18.1	46	17.1	43.5
4XL	64	162	18.9	48	17.9	45.5
5XL	68	172	19.7	50	18.7	47.5

MEN'S RELAXED FIT JACKETS						
SIZE	CHEST		SHOULDER		CENTER FRONT FROM HSP*	
	IN	CM	IN	CM	IN	CM
S	50	127	20.4	51.8	24.5	62
M	52.5	133.3	21	53.3	25	63.5
L	58	147.3	22	55.9	26	65.5
XL	62.5	158.8	23	58.4	26.5	67
2XL	66	167.6	24	61	27	69
3XL	68	172.7	24.5	62.2	27.5	70

*High Shoulder Point (HSP). Relaxed fit is wider in the shoulders, body and sleeve and shorter in body length than the V-Twin fit.

WOMEN'S V-TWIN FIT JACKETS						
SIZE	CHEST		SHOULDER		CENTER FRONT	
	IN	CM	IN	CM	IN	CM
XS	37	94	17	43	19.7 - 22	50 - 56
S	39.5	100	17.3	44	20.5 - 22.8	52 - 58
M	41.5	106	17.7	45	21.3 - 23.6	54 - 60
L	44	112	18.1	46	22 - 24.4	56 - 62
XL	47	120	18.9	48	22.8 - 25.2	58 - 64
2XL	50.4	128	19.7	50	23.6 - 26	60 - 66
3XL	53.5	136	20.5	52	24.4 - 26.8	62 - 68
1W	48.4	123	19.3	49	22.8	58
2W	51.6	131	20.1	51	23.6	60
3W	54.7	139	20.9	53	24.4	62

WOMEN'S TOUR JACKET						
SIZE	CHEST		SHOULDER		CENTER FRONT	
	IN	CM	IN	CM	IN	CM
XS	40.6	103	17.3	44	22.8	58
S	42.9	109	17.7	45	23.6	60
M	45.3	115	18.1	46	24.4	62
L	47.6	121	18.5	47	25.2	64
XL	50.8	129	19.3	49	25.9	66
2XL	53.9	137	20	51	26.8	68
3XL	57	145	20.9	53	27.6	70
1W	48.4	123	19.3	49	22.8	58
2W	51.6	131	20.1	51	23.6	60
3W	54.7	139	20.9	53	24.4	62

WOMEN'S V-TWIN FIT VESTS						
SIZE	CHEST		SHOULDER		CENTER FRONT	
	IN	CM	IN	CM	IN	CM
XS	34.5	88	10.2	26	11.2	28.5
S	37	94	10.6	27	12	30.5
M	39.5	100	11	28	12.8	32.5
L	42	106	11.4	29	13.6	34.5
XL	45	114	12.2	31	14.4	36.5
2XL	48	122	13	33	15.16	38.5
3XL	51	130	13.8	35	15.9	40.5
1W	46	117	12.6	32	14.4	36.5
2W	49	125	13.4	34	15.2	38.5
3W	52.5	133	14.2	36	15.9	40.5

MEN'S CHAPS					
SIZE	WAIST		INSEAM		
	IN	CM	IN	CM	
M	35	89	33	84.5	
L	38	97	33	84.5	
XL	41	105	33	84.5	
2XL	44.5	113	33	84.5	
3XL	47.5	121	33	84.5	
4XL	51	129	33	84.5	
5XL	54	137	33	84.5	

MEN'S TOUR PANTS					
SIZE	WAIST		INSEAM		
	IN	CM	IN	CM	
30	32.7	83	33	84	
32	34.6	88	33.5	85	
34	36.7	93	33.9	86	
36	38.5	98	34.3	87	
38	40.6	103	34.6	88	
40	42.5	108	35	89	
42	44.5	113	35.4	90	

WOMEN'S CHAPS					
SIZE	WAIST		INSEAM		
	IN	CM	IN	CM	
S	35.5	90	33	83.5	
M	37	94	33	83.5	
L	40	102	33	83.5	
XL	43	110	33	83.5	
2XL	46.5	118	33	83.5	
3XL	50	126	33	83.5	
4XL	53	134	33	83.5	
5XL	56	142	33	83.5	

WOMEN'S TOUR PANTS					
SIZE	WAIST		INSEAM		
	IN	CM	IN	CM	
XS	27.9	71	32.3	82	
S	29.9	76	32.7	83	
M	31.9	81	33	84	
L	33.9	86	33.5	85	
XL	35.8	91	33.9	86	
2XL	37.8	96	34.3	87	
3XL	39.8	101	34.6	88	

RAINSUIT- JACKET						
SIZE	CHEST		SHOULDER		CENTER FRONT (INCLUDES COLLAR)	
	IN	CM	IN	CM	IN	CM
XS	45	114	21.5	54	26.5	67
S	48	122	21.5	55	26.8	68
M	51.2	130	22	56	27.2	69
L	54.5	138	22.5	57	27.6	70
XL	58.3	148	23	59	28.3	72
2XL	62	158	24	61	29.1	74
3XL	66.1	168	24.5	63	29.9	76
4XL	70.1	178	25.6	65	30.7	78
5XL	74	188	26.5	67	31.5	80

RAINSUIT- PANTS					
SIZE	WAIST (RELAXED)		INSEAM		
	IN	CM	IN	CM	
XS	33	84	31.9	81	
S	34.5	88	32.3	82	
M	36.2	92	32.7	83	
L	39.4	100	33.3	84.5	
XL	42.5	108	34	86	
2XL	45.5	116	34.5	87.5	
3XL	50	124	35	89	
4XL	52	132	35.6	90.5	
5XL	55.1	140	36.2	92	

MEN'S T-SHIRTS AND POLOS						
SIZE	CHEST		SHOULDER		CENTER FRONT	
	IN	CM	IN	CM	IN	CM
S	37	94	18.5	46.5	24	60.5
M	41	104	19	48	24	61.5
L	45	114	19.5	49.5	24.5	62.5
XL	49	124	20	51	25	63.5
2XL	53	134	20.5	52.5	25.5	64.5
3XL	56.5	144	21.5	54	26	65.5
4XL	62.5	159	22	56.25	26.5	67
5XL	68.5	174	23	58.5	27	68.5

MEN'S SHIRTS AND ZIP THRUS								
SIZE	CHEST		SHOULDER		CENTER FRONT		ZIP THRU CENTER FRONT	
	IN	CM	IN	CM	IN	CM	IN	CM
S	40	102	19	48.5	27	69	23.5	59.5
M	44	112	19.5	50	27.5	70	24	60.5
L	48	122	20.5	51.5	28	71	24	61.5
XL	52	132	21	53	28.5	72	24.5	62.5
2XL	56	142	21.5	54.5	28.5	73	25	63.5
3XL	60	152	22	56	29	74	25.5	64.5

MEN'S 1901 FASHION FIT T-SHIRTS						
SIZE	CHEST		SHOULDER		CENTER FRONT	
	IN	CM	IN	CM	IN	CM
S	39	99	17	43	23.5	59.5
M	41	104	17.5	44.5	24.3	62
L	43	110	18	46	25.2	64
XL	46	117	18.7	47.5	26.1	66.5
2XL	49	124	19.5	49.5	27	68.5

A closer fit with slimmed down shoulder and sleeve. Chest width is larger than our other tees, however fit narrows from chest, to waist, to hem, giving an overall slimmer fit.

WOMEN'S SHIRTS		
----------------	--	--



LIBERTY JACKET

AVAILABLE FOR DELIVERY NOW

VENTED

This Made in USA horsehide jacket is everlasting. Horsehide is a very dense durable leather which is non porous (non absorbent) and has a natural ability to repel moisture. It has a removable quilted liner for cooler rides and lacing at the sides for adjustability.

FEATURES

1.2-1.4mm Horsehide leather shell
Fixed lining- airmesh
Removable liner- quilted vest
Hidden ventilation panels on front & back
2 exterior & 2 interior pockets
Side lace adjustment & zippered cuffs
Relaxed Fit

ADDITIONAL FEATURES

Removable CE protectors in shoulders & elbows; action back; embroidered logo on back; headdress patch on right sleeve; oval quality patch on left sleeve

MADE IN
★ ★ ★ ★ ★
U.S.A
★ ★ ★ ★ ★

S-3XL 2867998



ROCKER JACKET

AVAILABLE FOR DELIVERY NOW

VENTED

Modern styled leather riding jacket, with subtle laser burnout arm logo and small embossed back logo. Features vents for cooling and removable quilted plaid liner for cooler days.

FEATURES

1-1.2mm thick leather shell
Fixed lining- airmesh
Removable liner- quilted plaid vest
Hidden ventilation panels on arms & back
4 exterior & 2 interior pockets
Side adjust zippers & zippered cuffs
V-Twin Fit

ADDITIONAL FEATURES

Removable CE protectors in shoulders & elbows; action back; buckle fasten collar; antique brass zippers; embossed logo on back; circle headdress patch on right sleeve

S-3XL 2863827



FINAL SEASON

HEDSTROM JACKET

AVAILABLE FOR DELIVERY NOW. FINAL SEASON

VENTED

Distressed black leather classic riding jacket. Subtle black embroidered logos on front and back. Features vents for cooling and removable quilted plaid liner for cooler days.

FEATURES

0.9-1.0mm thick leather shell
Fixed lining- airmesh
Removable liner- quilted plaid vest
Hidden ventilation panels on back & arms
3 exterior & 2 interior pockets
Side adjust zippers & snap wrist cuffs
V-Twin Fit

ADDITIONAL FEATURES

Removable CE protectors in shoulders & elbows; action back; antique brass zippers; script logo debossed on front; embroidered logo on back; leather circle headdress patch on right sleeve

S-3XL 2865213



BENJAMIN JACKET
AVAILABLE FOR DELIVERY NOW

VENTED

A vintage look soft brown leather riding jacket with on trend patch pockets, shoulder panels and buckle collar. This jacket features vents for cooling and removable plaid liner for cooler days.

FEATURES
0.9-1.0mm thick dull leather shell
Fixed lining- airmesh
Removable liner- quilted plaid vest
Hidden ventilation panels on arms & back
6 exterior pockets
Powerstretch side panels & snap cuffs
V-Twin Fit

S-5XL 2863703

ADDITIONAL FEATURES
Removable CE protectors in shoulders and elbows; action back; antique brass snaps; script logo embroidered on back; circle headdress patch on left sleeve; buckle collar



PERFORATED ROUTE JACKET
AVAILABLE FOR DELIVERY NOW

PUNCHED LEATHER

A punched leather riding jacket in washed gray. The stripes on the arms and snap collar give a vintage racing look. The logos are bold with large red back applique and colorful sleeve logo. The perforated leather allows great air flow for warm days and a removable plaid liner offers insulation for cool temperatures.

FEATURES
0.6-0.8mm thick perforated leather shell
Fixed lining- airmesh
Removable liner- quilted plaid vest
3 exterior & 2 interior pockets
Zip side expansion panels & snap cuffs
V-Twin Fit

S-3XL 2865214

ADDITIONAL FEATURES
Removable CE protectors in shoulders & elbows; action back; antique brass zippers; script logo across back; circle headdress patch on right sleeve; American flag patch on left sleeve



FREEWAY JACKET
AVAILABLE FOR DELIVERY NOW

VENTED

A lighter weight leather riding jacket in black leather. The Indian Motorcycle® red and cream stripes are a cool highlight with the large back logo and sleeve patches. Large ventilation zippers on the chest and back and smaller sleeve zippers allow great air flow for warmer days and a removable plaid liner offers insulation for cooler days.

FEATURES
0.9-1.0mm thick leather shell
Fixed lining- airmesh
Removable liner- quilted long sleeve
Hidden ventilation panels on the back & arms
2 exterior & 2 interior pockets
Powerstretch side panels & snap wrist cuffs
V-Twin Fit

S-5XL 2863704

ADDITIONAL FEATURES
Removable CE protectors in shoulders & elbows; action back; antique brass zippers; script logo embroidered on front; embroidered & applique logo on back; circle headdress patch on right sleeve; American flag patch on left sleeve



CLASSIC JACKET 2
AVAILABLE FOR DELIVERY NOW

CE

A true Indian Motorcycle® classic. This timeless style jacket features a slightly worn dark brown leather. Snap down collar stops any flapping when riding. The jacket also features a removable quilted plaid liner for cooler days.

FEATURES
1.2-1.4mm thick leather shell
Fixed lining- plaid
Removable liner- quilted plaid vest
2 exterior, 1 chest & 1 interior pockets
Zippered side expansion panels; snap wrist adjustment tabs
V-Twin Fit
CE certified; Directive 89/686/CE V06. French Protocol Level 1

S-5XL 2867669

ADDITIONAL FEATURES
Removable CE protectors in shoulders & elbows; snap down collar; antique brass zippers; embroidered script logo on front left; applique/embroidered script logo on back; circle headdress patch on right sleeve



NEW
OUTSIDER VEST

This black leather vest is a modern classic. It features practical secure chest pockets with flaps and zip adjustable sides.

FEATURES

- 0.9-1.0mm thick leather shell
- Fixed lining
- 4 exterior & 1 interior pocket
- Zip side expansion panels
- V-Twin Fit

ADDITIONAL FEATURES

Antique brass zip; stitch detailing on front; embroidered front logo applique logo on back

S-5XL **2868674**



**INDIAN MOTORCYCLE®
BROWN LEATHER VEST**

AVAILABLE FOR DELIVERY NOW

Featuring the vintage brown leather used on the Benjamin Jacket, this vest is a more subtly branded option, with tonal embroidered front and back logos.

FEATURES

- 0.9-1.0mm thick leather shell
- Fixed lining
- 2 exterior & 1 interior pockets
- V-Twin Fit

ADDITIONAL FEATURES

Antique brass snaps; stretch side panels; whipstitch detail on front & back yoke; branded buckles on sides; embroidered front logo; applique & embroidered logo on back

S-5XL **2863707**



INDIAN MOTORCYCLE® VEST 2

AVAILABLE FOR DELIVERY NOW

This black leather vest with laced side seams is a traditional staple for the cruiser rider. The laces can be adjusted to allow expansion where needed. The logos are a combination of embroidery and leather applique.

FEATURES

- 1.0-1.2mm thick dull leather shell
- Fixed lining
- 2 exterior & 1 interior pockets
- V-Twin Fit

ADDITIONAL FEATURES

Antique brass snaps; lace up sides; embroidered front logo; applique & embroidered logo on back

S-5XL **2863711**



**INDIAN MOTORCYCLE®
MEN'S BROWN LEATHER CHAPS**

AVAILABLE FOR DELIVERY NOW

In brown leather that matches the Benjamin Jacket and Brown Leather Vest. There is adjustability across the waist and thigh with stretchable heavy spandex. Additional adjustability is provided by two full length zippers (to make the leg looser or tighter) and raw edge hems which can be cut to size.

FEATURES

- 0.9-1.0mm thick dull leather shell
- Fixed lining
- 3 exterior pockets
- Lacing at back; heavy spandex on thigh; double zip outseam

ADDITIONAL FEATURES

Antique brass zippers & snaps; raw edge hem; embroidered script logo on front

M-3XL **2866290**



INDIAN MOTORCYCLE® MEN'S CHAPS

AVAILABLE FOR DELIVERY NOW

These black leather chaps offer great adjustability across waist and thigh with stretchable heavy spandex, 2 full length zippers to make the leg looser or tighter and raw edge hems which can be cut to size.

FEATURES

- 1.0-1.2mm thick dull leather shell
- Fixed lining
- 3 exterior pockets
- Lacing at back; heavy spandex on thigh; double zip outseam

ADDITIONAL FEATURES

Antique brass zippers & snaps; raw edge hem; embroidered script logo on front

M-5XL **2863712**



DRIFTER MESH JACKET

AVAILABLE FOR DELIVERY NOW

MESH

A jacket for warmer days. The mesh panels allow maximum air flow. There are leather panels on the elbows. A removable lightweight windproof liner offers insulation when temperatures drop.

FEATURES

Polyester mesh with leather elbow panels
Fixed lining- airmesh
Windproof removable liner
2 exterior & 1 interior pocket
Side adjustment zips, snap collar & wrists
V-Twin Fit

ADDITIONAL FEATURES

Removable CE protectors in shoulders and elbows; action back; antique brass snaps; script logo embroidered on chest; embroidered and applique logo on back; headdress patch on right sleeve

S-3XL

2867999



SHADOW MESH JACKET

AVAILABLE FOR DELIVERY NOW

MESH

This is a full mesh riding jacket. Full mesh construction offers maximum air flow for the hot days. A removable lightweight windproof liner gives insulation for the cold days.

FEATURES

Polyester mesh shell
Fixed lining- airmesh
Windproof removable liner
2 exterior & 1 interior pocket
Side adjustment zips & snap cuffs
V-Twin Fit

ADDITIONAL FEATURES

Removable CE protectors in shoulders & elbows; action back; antique brass zippers on waist pockets; leather patch on front & back; circle leather patch on right sleeve

S-3XL

2868000



LIGHTWEIGHT MESH JACKET

AVAILABLE FOR DELIVERY NOW

MESH

Retro styled full mesh riding jacket. Bold branding on back and front demonstrates Indian Motorcycle® as your brand of choice. Full mesh construction offers maximum air flow for the warmest of days. A removable lightweight windproof liner offers insulation on cool mornings.

FEATURES

Fixed lining- airmesh
Windproof removable liner- long sleeve
2 exterior & 1 interior pockets
Zippered side expansion panels; snap cuff
V-Twin Fit

ADDITIONAL FEATURES

Removable CE protectors in shoulders & elbows; action back; snap fasten collar; script logo embroidered & applique on front; embroidered and applique logo on back; circle headdress patch on right sleeve

S-3XL

2865215



TALL SIZES

SPRINGFIELD MESH JACKET

AVAILABLE FOR DELIVERY NOW

MESH

A jacket for warm weather riding. Full mesh panels allow maximum air flow for rider cooling. There are leather panels on the shoulder and elbows. A removable lightweight windproof liner offers insulation when temperatures drop.

FEATURES

Fixed lining- airmesh
Windproof removable liner- long sleeve
2 exterior & 2 interior pockets
Powerstretch side panels; Velcro® sleeve adjusters; zippered cuff
V-Twin Fit

ADDITIONAL FEATURES

Removable CE protectors in shoulders & elbows; action back; 3M® reflective piping on back; script logo embroidered & applique on front; leather branded patch on back; circle headdress patch on right sleeve; American flag patch on left sleeve

S-5XL, LT-3XLT

2863713



FRONTIER JACKET

AVAILABLE FOR DELIVERY NOW

WATER RESISTANT

A water resistant riding jacket constructed of micro fiber with a brushed cotton effect and contrast brown suede collar. There is a removable plaid quilted liner for insulation when the weather is cooler and ventilation panels for cooling on warm days.

FEATURES

Fixed lining- airmesh
Removable liner- quilted plaid vest
Hidden shoulder, arm pit & back vents
4 exterior & 3 interior pockets
Snap cuffs; side adjustment snaps
V-Twin Fit

ADDITIONAL FEATURES

Removable CE protectors in shoulders & elbows; breathable; action back; snap down collar; antique brass snaps & zips; script logo applique and embroidered on back; circle headdress patch on right sleeve

S-3XL

2866180



HIGHWAY VEST

AVAILABLE FOR DELIVERY NOW

CASUAL

Constructed of a tough cotton canvas with leather trim, this vest has a classic denim style. Can be worn alone or over a leather jacket when you purchase the next size up.

FEATURES

4 exterior pockets
Button side closure
V-Twin Fit

ADDITIONAL FEATURES

Antique silver branded two-tone buttons; bottom pockets zip close; embroidered front logo; applique & embroidered logo on back

S-5XL

2865216



NEW
SHIFT JACKET



WATER RESISTANT

A modern, utility look waxed cotton jacket with military inspired details around the shoulders, collar and underarms. Secure pocket details on the front add style and practicality.

FEATURES

Fixed lining
Removable liner - quilted vest
4 exterior & 2 interior pockets
Zippered side expansion panels; snap cuffs
V-Twin Fit
CE certified; Directive 89/686/EEC.
prEN 17092

ADDITIONAL FEATURES

Removable CE protectors in shoulders & elbows; antique brass zippers; hidden snap down collar; action back; leather patch on front; woven patch at back neck

S-5XL **2868673**



WAXED JACKET

AVAILABLE FOR DELIVERY NOW

WATER RESISTANT

A waxed cotton jacket with a rib knit collar for comfort. This has a fixed lining and protectors.

FEATURES

Fixed lining
3 exterior & 2 interior pockets
Snap cuffs; side adjustment zippers
V-Twin Fit

ADDITIONAL FEATURES

Removable CE protectors in shoulders & elbows; rib knit collar with snap fasten; action back; leather patch on front; woven patch at back neck

S-5XL **2867629**



WAXED VEST

AVAILABLE FOR DELIVERY NOW

CASUAL

A cool waxed cotton vest with a rib knit collar.

FEATURES

Fixed lining
3 exterior & 1 interior pockets
Side adjustment zippers
V-Twin Fit

ADDITIONAL FEATURES

Rib knit collar; antique brass snaps, rivets and zippers; embossed leather patch on front; woven patch with small printed logo on back neck

S-5XL **2867630**



1901 JACKET

AVAILABLE FOR DELIVERY NOW

CASUAL

A lightweight casual jacket with full on cool Indian Motorcycle® branding. Retro chest and sleeve stripes have a vintage race feel.

FEATURES

Fixed lining- airmesh
2 exterior, 2 interior pockets
V-Twin Fit

ADDITIONAL FEATURES

Water resistant & breathable; snap fasten collar; action back; embroidered & applique script logo on front; printed graphic on back; woven patches on left & right sleeve

S-5XL

2866177



OSCAR JACKET

AVAILABLE FOR DELIVERY NOW

CASUAL

A cool over shirt style jacket in waxed cotton. Snap down collar ensures the collar stays in place during rides.

FEATURES

Fixed lining- quilted
4 exterior & 1 interior pockets
Snap cuffs
V-Twin Fit

ADDITIONAL FEATURES

Snap collar; antique brass zippers & snaps; action back; embossed leather logo patch on chest pocket; embroidered & applique logo on back

S-3XL

2866179



BOMBER JACKET

AVAILABLE FOR DELIVERY NOW

CASUAL

This is a lightweight casual jacket with large branding on the back.

FEATURES

Fixed lining
3 exterior & 2 interior pockets
Rib knit collar, cuffs & hem
V-Twin Fit

ADDITIONAL FEATURES

Snap close waist pockets; antique brass zips; embroidered logo on front and back; "Since 1901" embroidered on right sleeve

S-5XL

2867631



TALL SIZES

SPIRIT JACKET

AVAILABLE FOR DELIVERY NOW

CASUAL

A lightweight casual jacket for the Indian Motorcycle® fan. Bold branding stands out on this simple style jacket.

FEATURES

Fixed lining
2 exterior & 2 interior pockets
Snap cuffs
V-Twin Fit

ADDITIONAL FEATURES

Water resistant; action back; antique silver zippers; script logo embroidered on front; applique & embroidered logo on back; circle headaddress patch on right sleeve; contrast piping

S-5XL, LT-3XLT

2863829



SCOUT® JACKET

AVAILABLE FOR DELIVERY NOW

CASUAL

A lightweight casual jacket for the proud Scout® rider. Sleeve patches and large back embroidery feature Scout® and Indian Motorcycle® branding.

FEATURES

Fixed lining- airmesh
4 exterior & 2 interior pockets
Snap adjustment waist tabs
V-Twin Fit

ADDITIONAL FEATURES

Water resistant & breathable; action back; snap fasten collar; antique brass zippers; action back; Scout® logo on front; embroidered & applique Scout® logo on back; woven patches on left & right sleeve

S-5XL

2866178



INDIAN MOTORCYCLE® TOUR JACKET

AVAILABLE FOR DELIVERY NOW

WATERPROOF

This jacket will work in all conditions for the serious touring rider with waterproofing, ventilation and multi layer options. The outer shell is a tough nylon mix fabric, and if worn on its own has hidden zip down vented panels to allow great air flow. If the waterproof inner lining is zipped in, then the jacket converts to a waterproof jacket. An additional quilted liner offers great insulation against the cold.

FEATURES

Fixed lining- airmesh
Removable liners- waterproof long sleeve & separate quilted long sleeve
Hidden ventilation panels on shoulders & back
2 exterior & 1 interior pockets
Zippered side expansion panels; Velcro® straps at waist, wrist & arms
V-Twin Fit

ADDITIONAL FEATURES

Removable CE protectors in shoulders & elbows; 100% waterproof (with liner); mesh chest panels for maximum airflow (without liner); anti microbial odor control fabric under arms; 3M® reflective piping; action back; removable storm collar; script logo on front & back; logo patches on right arm & storm collar

S-5XL

2863831



INDIAN MOTORCYCLE® COLOR BLOCK RAINSUIT - UNISEX

AVAILABLE FOR DELIVERY NOW

WATERPROOF

A two piece jacket and pant rainsuit constructed of waterproof and breathable nylon. Every seam is taped to ensure you stay dry in the rain. Designed to be worn over your leathers this is a large fit. The pant has removable suspenders.

FEATURES

Fixed lining- airmesh
1 interior pocket
Adjustable Velcro® cuffs & waist; stirrups;
full length Velcro® on front opening to reinforce zip closure
V-Twin Fit

ADDITIONAL FEATURES

100% waterproof & breathable;
reflective piping; removable suspenders; stows into self storage bag attached to jacket lining; branding on the front, legs & back

XS-5XL

2867447



INDIAN MOTORCYCLE® TOUR PANTS

AVAILABLE FOR DELIVERY NOW

WATERPROOF

Pants designed to match the Tour Jacket. These pants are waterproof via a z liner system. Cooling vents allow air flow around the z liner without compromising the waterproof system.

FEATURES

Fixed lining- airmesh
Hidden ventilation panels on thigh
2 exterior pockets
Elastic waistband; Velcro® adjuster at hem;
powerstretch panels at knees & back

ADDITIONAL FEATURES

100% waterproof; anti microbial odor control fabric at crotch; heat resistant inseam panel at hem; 3M® reflective piping; zips to optional Tour Jacket; logo patch on front & back

30-44

2863832



DRIFTER MESH JACKET
PAGE 12



HEDSTROM JACKET
AVAILABLE FOR DELIVERY NOW

VENTED A classic black leather riding jacket. Simple flattering female cut with a dull subtle black leather. Logos are a subtle black on black emboss and embroidered.

FEATURES
0.8-1.0mm thick dull leather shell
Fixed lining- airmesh
Removable liner- quilted plaid vest
Zippered vents in sleeves & back
2 exterior & 2 interior pockets
Zip & snap cuff wrist; side adjustment zips
Women's V-Twin Fit

ADDITIONAL FEATURES
Removable CE protectors in shoulders & elbows; action back; antique brass snaps & zippers; debossed chest logo; embroidered script logo on back; circle headdress patch on right sleeve

XS-3XL 2865217



BENJAMIN JACKET
AVAILABLE FOR DELIVERY NOW

VENTED A vintage look soft brown leather riding jacket. On trend patch pockets and quilted elbow and shoulder panels give a retro look. The jacket features vents for warm weather riding and removable plaid quilted liner for cool temperatures.

FEATURES
0.9-1mm thick dull leather shell
Fixed lining- airmesh
Removable liner- quilted plaid vest
Hidden ventilation panels on arms & back
4 exterior pockets
Powerstretch side panels; zippered cuffs
Women's V-Twin Fit

ADDITIONAL FEATURES
Removable CE protectors in shoulders & elbows; action back; antique brass snaps; script logo embroidered on back; circle headdress patch on left sleeve; snap collar

XS-3XL 2863719



EFFIE JACKET
AVAILABLE FOR DELIVERY NOW

CASUAL A soft and supple black leather off bike jacket. This jacket has slimmer cut sleeves and a more fashionable cut. Strong Indian Motorcycle® logos on front, back and sleeve show off your brand loyalty.

FEATURES
0.8-1.0mm thick leather shell
Fixed lining- airmesh
Removable liner- quilted plaid vest
2 exterior & 2 interior pockets
Zip and snap wrist; side adjustment zips
Women's V-Twin Fit

ADDITIONAL FEATURES
Non riding jacket; action back; antique brass snaps; script logo embroidered on front; applique & embroidered logo on back; circle headdress patch on right sleeve; snap collar

XS-3XL 2865218



NEW BLAZE VEST

A black leather vest with decorative lace detailing on the front and edgy stud detailing that accentuates the figure. Laced side-seams allow expansion where needed.

FEATURES

0.55-0.65mm thick leather shell
Fixed lining
1 interior pocket
Adjustable side lacing
Women's V-Twin Fit

ADDITIONAL FEATURES

Antique brass zip & studs; front lacing;
embossed logo on lapel; snap down
lapel; embroidered & applique logo
on back

XS-3XL

2868675



INDIAN MOTORCYCLE® CHAPS

AVAILABLE FOR DELIVERY NOW

These black leather chaps offer great adjustability across waist and thigh with stretchable heavy spandex, 2 full length zippers to make the leg looser or tighter and raw edge hems which can be cut to size.

FEATURES

Fixed lining
3 exterior pockets
Lacing at back; heavy spandex on thigh
Double zip outseam

ADDITIONAL FEATURES

Antique brass zippers & snaps; raw
edge hem; embroidered logo on
front & back

S-5XL

2863714



FRINGE VEST

AVAILABLE FOR DELIVERY NOW

This style uses the vintage brown leather used on the Benjamin Jacket. The vest has feminine fringe on the front and back, with tonal embroidery on the back.

FEATURES

0.9-1.0mm leather shell
Fixed lining
2 exterior & 1 interior pocket
Zippered side expansion panels
Women's V-Twin Fit

ADDITIONAL FEATURES

Antique brass snaps; debossed logo on front;
embroidered logo on back

XS-3XL

2866291



INDIAN MOTORCYCLE® BROWN LEATHER VEST

AVAILABLE FOR DELIVERY NOW

Featuring the vintage brown leather used on the Benjamin Jacket. This vest is a more subtly branded option, with tonal embroidered front and back logos.

FEATURES

0.9-1.0mm dull leather shell
Fixed lining
2 exterior & 1 interior pockets
Side stretch panels
Women's V-Twin Fit

ADDITIONAL FEATURES

Antique brass snaps; whipstitch detail on
front & back yoke; branded buckles on
sides; embroidered front logo; applique &
embroidered logo on back

XS-3XL

2863708



INDIAN MOTORCYCLE® VEST 2

AVAILABLE FOR DELIVERY NOW

Black leather vest with laced side seams is a traditional staple for the cruiser rider. The laces can be adjusted to allow expansion where needed. The logos are a combination of embroidery and leather applique. Branded rivets decorate the shoulder and back panel.

FEATURES

1.0-1.2mm leather shell
Fixed lining
2 exterior & 1 interior pockets
Women's V-Twin Fit

ADDITIONAL FEATURES

Antique brass snaps; lace up sides; embroidered
front logo; applique & embroidered logo on back

XS-3XL, 1W-3W

2863716





DRIFTER MESH JACKET

AVAILABLE FOR DELIVERY NOW

MESH

A full mesh riding jacket with bold branding on back. Full mesh construction offers the greatest air flow for hot days. A removable lightweight windproof liner gives insulation in cool temperatures.

FEATURES

Fixed lining- airmesh
Windproof removable liner- long sleeve
2 exterior & 1 interior pockets
Side adjustment zips; zip cuff
Women's V-Twin Fit

ADDITIONAL FEATURES

Removable CE protectors in shoulders & elbows; snap collar; action back; logo patch on front; applique and embroidered logo on back

XS-3XL 2867448



NEW 1901 JACKET

CASUAL

A lightweight casual jacket with slick Indian Motorcycle® branding. Retro chest and sleeve stripes give a polished vintage look.

FEATURES

Fixed lining- airmesh
2 exterior & 2 interior pockets
Snap wrist
Women's V-Twin Fit

ADDITIONAL FEATURES

Water resistant & breathable; snap fasten collar; embroidered & applique logo on front; printed graphic on back; woven patches on sleeves

XS-3XL 2868676



LIGHTWEIGHT MESH JACKET

AVAILABLE FOR DELIVERY NOW

MESH

Retro styled full mesh riding jacket. Bold branding on back and front demonstrates Indian Motorcycle® as your brand of choice. Full mesh construction offers maximum air flow for the warmest of days. A removable lightweight windproof liner offers insulation for cool mornings.

FEATURES

Fixed lining- airmesh
Windproof removable liner- long sleeve
2 exterior & 2 interior pockets
Side adjustment zips; snap cuff
Women's V-Twin Fit

ADDITIONAL FEATURES

Removable CE protectors in shoulders & elbows; power stretch action back; snap collar & cuffs; script logo embroidered & applique on front & back; circle headdress patch on right sleeve

XS-3XL 2866181



SPIRIT JACKET

AVAILABLE FOR DELIVERY NOW

CASUAL

Lightweight casual jacket. This flattering female cut jacket, with light color panels to slim the waist has strong Indian Motorcycle® branding with logos on front, back and sleeve.

FEATURES

Fixed lining
2 exterior & 2 interior pockets
Powerstretch side panels; snap wrist; back snaps
Women's V-Twin Fit

ADDITIONAL FEATURES

Action back; water resistant & breathable; embroidered logo on front; applique & embroidered logo on back; circle headdress patch on right sleeve

XS-3XL 2865220



SPRINGFIELD MESH JACKET

AVAILABLE FOR DELIVERY NOW

MESH

A jacket for warm weather riding. Full mesh panels allow maximum air flow for rider cooling. There are leather panels on the shoulder and elbows. A removable lightweight windproof liner offers insulation when temperatures drop.

FEATURES

Fixed lining- airmesh
Windproof removable liner- long sleeve
2 exterior & 2 interior pockets
Powerstretch side panels; zippered & Velcro® wrist; Velcro® sleeve adjusters
Women's V-Twin Fit

ADDITIONAL FEATURES

Removable CE protectors in shoulders & elbows; leather shoulder & elbow pads; action back; script applique and embroidered on front; leather logo patch on back; circle headdress patch on right sleeve; American flag patch on left sleeve

XS-3XL 2863717



LORETTO JACKET

AVAILABLE FOR DELIVERY NOW

CASUAL

This is a stretch cotton mix jacket with a rib knit collar, for comfort. This casual style looks good with subtle branding.

FEATURES

Fixed lining
4 exterior & 1 interior pockets
Adjustable waist tabs; snap cuffs
Women's V-Twin Fit

ADDITIONAL FEATURES

Stretch cotton mix fabric for added comfort; rib knit fasten collar; action back; embossed leather patch on front; small printed logo on back neck

XS-3XL 2867632



INDIAN MOTORCYCLE® TOUR JACKET

AVAILABLE FOR DELIVERY NOW

WATERPROOF

This jacket will work in all conditions for the serious touring rider with waterproofing, ventilation and multi layer options. The outer shell is a tough nylon mix fabric, and if worn on its own has hidden zip down vented panels to allow great air flow. Worn with the liner, this jacket is waterproof. An additional quilted liner offers great insulation against the cold.

FEATURES

Fixed lining- airmesh
Removable liners- waterproof long sleeve & separate quilted long sleeve
Hidden ventilation panels on shoulders & back
4 exterior & 1 interior pockets
Zippered side expansion panels;
Velcro® straps at waist, wrist & arms
Women's V-Twin Fit

ADDITIONAL FEATURES

Removable CE protectors in shoulders & elbows; 100% waterproof (with liner); mesh chest panels for maximum airflow (without liner); anti microbial odor control fabric under arms; 3M® reflective piping; action back; removable storm collar; script logo on front and back; logo patches on right arm & storm collar

XS-3XL, IW-3W 2863834



INDIAN MOTORCYCLE® TOUR PANTS

AVAILABLE FOR DELIVERY NOW

WATERPROOF

Pants designed to match the Tour Jacket. These pants are waterproof via a z liner system. Cooling vents allow air flow around the z liner without compromising the waterproof system.

FEATURES

Fixed lining- airmesh
Hidden ventilation panels on thigh
2 exterior pockets
Elastic waistband; Velcro® adjuster at hem
Powerstretch panels at knees & back

ADDITIONAL FEATURES

100% waterproof; anti microbial odor control fabric at crotch; heat resistant inseam panel at hem; 3M® reflective piping; zips to optional Tour Jacket; logo patch on front & back

XS-3XL 2863835



DRIFTER MESH JACKET
PAGE 24



DRIFTER MESH GLOVE CE

AVAILABLE FOR DELIVERY NOW

SUMMER Constructed using a combination of mesh, to allow airflow, and leather palm and finger panels. This lightweight glove is easy to wear in warm weather conditions.

FEATURES

Mesh glove with leather palm & wrist
Velcro® wrist closure
Touchscreen leather on fingertip & thumb
Mens CE certified; Directive 89/686/EEC.
EN 13594:2015

S-4XL 2867449



MESH GLOVE CE

AVAILABLE FOR DELIVERY NOW

SUMMER A combination of mesh to allow airflow and leather palm and finger panels construct this summer glove. The lightweight design offers very little bulk and is easy to wear in warm weather conditions.

FEATURES

Mesh glove with leather palm & wrist
Gel padded palm
Velcro® wrist closure
Mens & Womens CE certified; Directive 89/686/EEC. French Protocol Level 1

MEN'S: S-4XL 2867646
WOMEN'S: S-XL 2867647



FINGERLESS GLOVE

AVAILABLE FOR DELIVERY NOW

SUMMER A cruiser style fingerless glove in black leather. A double leather and gel palm panel adds comfort. The hooks on the end of the finger tips allow the glove to be removed easily.

FEATURES

Full leather construction
Gel padded palm
Velcro® wrist closure
Laser etched logo

MEN'S: S-4XL 2863720
WOMEN'S: S-XL 2863721



NEW
PASSAGE GLOVE CE

SUMMER A modern and stylish glove with hard knuckle protector, outer padding and Velcro® strap closure.

FEATURES

Mixed textile & leather construction
Hard knuckle protector
Velcro® wrist closure
Touchscreen finger & thumb tip
Mens CE certified; Directive 89/686/EEC.
EN 13594:2015

S-4XL 2868680



HEDSTROM GLOVE
PAGE 30



NEW
SOLO GLOVE CE

MID SEASON A strong and lightweight glove with hard knuckle protector offers protection and modern style.

FEATURES

Mixed textile & leather construction
Hard knuckle protector
Velcro® wrist closure
Touchscreen fingertip & thumb
Mens CE certified; Directive 89/686/EEC.
EN 13594:2015

S-4XL 2868679



NEW
CINDER GLOVE CE

MID SEASON A sporty style glove with contrasting perforated panels, Velcro® closure, and emblem patch. Complements nicely with the Benjamin Jacket.

FEATURES

Full leather construction
Padded palm
Velcro® wrist closure
Touchscreen fingertip & thumb
Mens CE certified; Directive 89/686/EEC.
EN 13594:2015

S-4XL 2868678



BROWN TEXTURE GLOVE

AVAILABLE FOR DELIVERY NOW

Simple unstructured short style brown leather glove. Contrast leather textures on the top and palm of the hand.

FEATURES

Full leather construction
Raw seam edges with double leather panel on palms
Velcro® wrist closure
Laser etched thumb logo

S-4XL

2867450



PERFORATED ROUTE GLOVE

AVAILABLE FOR DELIVERY IN JUNE

A punched leather glove with vintage stripes that looks great worn with the perforated route jacket.

FEATURES

Full leather construction
Padded palm
Velcro® wrist closure
Touchscreen finger & thumb tip
Laser etched logo
Mens CE certified; Directive 89/686/EEC.
EN 13594:2015

S-4XL

2867451



TWO TONE GLOVE

AVAILABLE FOR DELIVERY NOW

Two color glove with brown on the back of the hand and black on the palm side. Double leather on the palm for comfort, raw edge seams with contrast stitching and Velcro® closure.

FEATURES

Full leather construction
Double layer knuckle
Double leather panel on palms
Velcro® wrist adjustment
Mens CE certified; Directive 89/686/EEC.
EN 13594:2015

S-4XL

2867651



HEDSTROM GLOVE

AVAILABLE FOR DELIVERY NOW

Mid season, distressed black leather glove to match the Hedstrom Jacket. It has a padded knuckle for protection, gel palm panels and articulated fingers for rider comfort.

FEATURES

Full leather construction
Gel padded palm & padded knuckle
Velcro® wrist closure
Touchscreen compatible index finger & thumb

S-4XL

2865223



CLASSIC GLOVE

AVAILABLE FOR DELIVERY NOW

Mid season, classic black leather glove. Simple styling with double leather panels, perforated leather finger panels and Velcro® closure.

FEATURES

Full leather construction
Perforated inner finger panels
Exposed seam construction with double leather panel on palms
Velcro® wrist closure

MEN'S: S-4XL 2863310

WOMEN'S: S-XL 2863311



RETRO GLOVE

AVAILABLE FOR DELIVERY NOW

Mid season, black leather with red and cream leather panels to match several of our jackets. The padded knuckle, perforated finger panels and double leather contrast palms make these as comfortable as they are cool.

FEATURES

Full leather construction
Perforated inner finger panels
Padded knuckles
Velcro® wrist closure
Mens & Womens CE certified; Directive 89/686/EEC. French Protocol Level 1

MEN'S: S-4XL 2867649

WOMEN'S: S-XL 2867650



NEW DEERSKIN STRAP GLOVE

A deerskin glove in a classic style with Velcro® closure for wearing mid season.

FEATURES

Full deerskin leather construction
Heat branding on wrist
Velcro® wrist closure
Mens CE certified; Directive 89/686/EEC;
EN 13594:2015

S-4XL

2868677

INDIAN MOTORCYCLE® HELMETS



NEW // BIG SIZES

RETRO OPEN FACE HELMET, RED

A sharp, retro styled fiberglass shell helmet with contrast tan lining.

FEATURES

Glossy, UV lacquer finish
100% fiberglass outer shell; EPS inner shell
Fixed lining
Weight: 1150g
Safety: DOT certified; ECE certified

ADDITIONAL FEATURES

Detachable sunpeak & cheek pads; D ring closure; goggle fastener at back; Bluetooth® compatible

XS-4XL **2868872**



NEW // BIG SIZES

RETRO OPEN FACE HELMET, MATTE BLACK

A sharp, retro styled fiberglass shell helmet with contrast tan lining.

FEATURES

Matte, UV lacquer finish
100% fiberglass outer shell; EPS inner shell
Fixed lining
Weight: 1150g
Safety: DOT certified; ECE certified

ADDITIONAL FEATURES

Detachable sunpeak & cheek pads; D ring closure; goggle fastener at back; Bluetooth® compatible

XS-4XL **2868869**



NEW // BIG SIZES

RETRO OPEN FACE HELMET, GLOSSY BLACK

A sharp, retro styled fiberglass shell helmet with contrast tan lining.

FEATURES

Glossy, UV lacquer finish
100% fiberglass outer shell; EPS inner shell
Fixed lining
Weight: 1150g
Safety: DOT certified; ECE certified

ADDITIONAL FEATURES

Detachable sunpeak & cheek pads; D ring closure; goggle fastener at back; Bluetooth® compatible

XS-4XL **2868870**



NEW // BIG SIZES

RETRO OPEN FACE HELMET, SILVER

A sharp, retro styled fiberglass shell helmet with contrast tan lining.

FEATURES

Glossy, UV lacquer finish
100% fiberglass outer shell; EPS inner shell
Fixed lining
Weight: 1150g
Safety: DOT certified; ECE certified

ADDITIONAL FEATURES

Detachable sunpeak & cheek pads; D-ring closure; goggle fastener at back; Bluetooth® compatible

XS-4XL **2868871**



NEW // BIG SIZES

RETRO OPEN FACE HELMET, WHITE

A sharp, retro styled fiberglass shell helmet with tri-colored racing stripes and contrast tan lining.

FEATURES

Glossy, UV lacquer finish
100% fiberglass outer shell; EPS inner shell
Fixed lining
Weight: 1150g
Safety: DOT certified; ECE certified

ADDITIONAL FEATURES

Detachable sunpeak & cheek pads; D ring closure; goggle fastener at back; Bluetooth® compatible

XS-4XL **2868684**



NEW

RETRO FULL FACE HELMET

A retro-look full face helmet constructed of fiberglass outershell featuring fast tri-colored racer stripes.

FEATURES

Glossy, UV lacquer finish
100% fiberglass outer shell; EPS inner shell
Fixed inner lining
Weight: 1450g
Safety: DOT certified; ECE certified

ADDITIONAL FEATURES

Anti-fog Pinlock 30, anti-scratch shield coatings; detachable cheek pads; quick release chin strap; Bluetooth® compatible

XS-2XL **2868683**



NEW

SCOUT® OPEN FACE HELMET

AVAILABLE FOR DELIVERY NOW

A vintage-look open face helmet constructed of ABS outershell featuring sharp retro styling.

FEATURES

Glossy, UV lacquer finish
ABS outer shell; EPS inner shell
Fixed lining
Weight: 1050g
Safety: DOT certified

ADDITIONAL FEATURES

Detachable sunpeak & cheek pads; quick release chin strap; goggle fastener at back; Bluetooth® compatible

XS-2XL **2868681**



LIBERTY JET HELMET

AVAILABLE FOR DELIVERY NOW

This Liberty Jet Helmet has an ABS outershell and features an integrated sun visor and ventilation throughout.

FEATURES

Matte ABS outer shell; EPS inner shell
Removable, washable lining
Weight: 1250g
Safety: DOT certified; ECE certified

ADDITIONAL FEATURES

Anti-scratch visor; top & rear vents; inner sun visor; Bluetooth® compatible

XS-2XL **2867454**



NEW

RETRO OPEN FACE HELMET BUBBLE VISOR

Only works with the following Retro Open Face Helmets: 2868684, 2868869, 2868870, 2868871, 2868872.

ONE SIZE

A. CLEAR	2868873
B. GRAY	2868874
C. REFLECTIVE SILVER	2868875
D. ORANGE	2868876
E. RED	2868877
F. GRADIENT PINK	2868878



NEW

RETRO OPEN FACE HELMET SUN PEAK

Only works with the following Retro Open Face Helmets: 2868684, 2868869, 2868870, 2868871, 2868872.

ONE SIZE

2868830



HALF HELMET VISOR

AVAILABLE FOR DELIVERY NOW

Only works with the following half helmets: 2863696, 2864367.

ONE SIZE

2866311



OPEN FACE HELMET SUN PEAK

AVAILABLE FOR DELIVERY NOW

Only works with the following helmets: 2868681, 2866199, 2866310.

ONE SIZE

2863849



PINSTRIPE HALF HELMET

AVAILABLE FOR DELIVERY NOW

Black glossy ABS outer shell construction with rear size adjuster, so the fit can be easily adjusted.

FEATURES

Glossy, UV lacquer finish
ABS outer shell; EPS inner shell
Fixed lining
Weight: 985g
Safety: DOT certified

ADDITIONAL FEATURES

Size adjuster at rear

XS-XL

2867638



HALF HELMET 1

AVAILABLE FOR DELIVERY NOW

The most popular style of Indian Motorcycle® helmet. An ABS outer shell construction with a matte black, red and cream color scheme match with several Indian Motorcycle® jackets. There is a hidden drop down sun visor and removable ear and neck pads. The size can be adjusted via a rear adjust mechanism to get the perfect fit.

FEATURES

Matte ABS outer shell; EPS inner shell
Fixed inner lining
Weight: 980g
Safety: DOT certified

ADDITIONAL FEATURES

Inner sun visor; size adjuster at rear; Bluetooth® compatible

XS-2XL

2863696



HALF HELMET 2

AVAILABLE FOR DELIVERY NOW

The all matte black version of the most popular style of Indian Motorcycle® helmet. There is a hidden drop down sun visor and removable ear and neck pads. The size can be adjusted via a rear adjust mechanism to get the perfect fit.

FEATURES

Matte ABS outer shell; EPS inner shell
Fixed inner lining
Weight: 980g
Safety: DOT certified

ADDITIONAL FEATURES

Inner sun visor; size adjuster at back; Bluetooth® compatible

XS-2XL

2864367



HIGHWAY HALF HELMET

AVAILABLE FOR DELIVERY NOW

Black matte ABS outer shell construction with rear size adjuster, so the fit can be customized to the wearer.

FEATURES

Matte, UV lacquer finish
ABS outer shell; EPS inner shell
Fixed inner lining
Weight: 1135g
Safety: DOT certified

ADDITIONAL FEATURES

Snap on sun peak; zip off cheek pads; size adjuster at rear

XS-XL

2867639



SHADOW MESH JACKET
PAGE 12



ELITE HALF HELMET

AVAILABLE FOR DELIVERY NOW

Black matte fiberglass outer shell construction with rear size adjuster, so the fit can be easily adjusted.

FEATURES

Matte, UV lacquer finish
100% fiberglass outer shell; EPS inner shell
Fixed lining
Weight: 845g
Safety: DOT certified

ADDITIONAL FEATURES

Zip off cheek pads; size adjuster at rear

XS-XL

2867640



NEW
OUTPOST FULL FACE HELMET

Full face helmet construction of ABS outershell with vents and bold graphics

FEATURES

Glossy ABS outer shell; EPS inner shell
Removable, washable lining
Weight: 1550g
Safety: DOT certified; ECE certified

ADDITIONAL FEATURES

Anti-fog Pinlock 30, anti-scratch shield coatings; chin, top & rear vents; quick release chin strap Bluetooth® compatible

XS-2XL

2868682



FREEWAY FULL FACE HELMET

AVAILABLE FOR DELIVERY NOW

Full face helmet construction of ABS outershell with vents. There is a drop down internal sun visor.

FEATURES

Matte ABS outer shell; EPS inner shell
Removable, washable lining
Weight: 1450g
Safety: DOT certified; ECE certified

ADDITIONAL FEATURES

Anti-fog Pinlock 30, anti-scratch shield coatings; chin & top vents; inner sun visor; Bluetooth® compatible

XS-2XL

2867453



ROUTE MODULAR HELMET

AVAILABLE FOR DELIVERY NOW

High quality thermoplastic modular helmet with distinctive graphics. This helmet features vents and an integrated sun visor.

FEATURES

Matte finish
70% polycarbonate, 30% ABS outer shell; EPS inner shell
Removable, washable cheek pads
Weight: 1600g
Safety: DOT certified; ECE certified

ADDITIONAL FEATURES

Anti-fog Pinlock 30; top & rear vents; Inner sun visor; Bluetooth® compatible

XS-2XL

2867637



NEW
RETRO FULL FACE HELMET VISOR

Only works with Retro Full Face Helmet, 2868683.

ONE SIZE

2868829



LIBERTY JET HELMET VISOR

AVAILABLE FOR DELIVERY NOW

ONE SIZE

2867461



FREEWAY FULL FACE HELMET VISOR

AVAILABLE FOR DELIVERY NOW

ONE SIZE

2867460



ROUTE MODULAR HELMET VISOR

AVAILABLE FOR DELIVERY NOW

ONE SIZE

2867643

PINLOCK 30 FOG RESISTANT
INSERT LENS - CLEAR (NOT PICTURED)

AVAILABLE FOR DELIVERY NOW

ONE SIZE

2867462



NEW
MEN'S MESH HI-TOP SNEAKER

AVAILABLE FOR DELIVERY NOW

Casual day sneaker. Vibram® sole to provide grip and abrasion resistance. The premium cow leather, antique silver eyelets and breathable mesh panel design make this sneaker a favorite.

FEATURES

- 1.4-1.5 mm thick durable cow leather
- Gusset tongue keeps out sand & water
- Antibacterial microfiber insock & mesh lining
- Includes black & red waxy shoe laces

SIZE: 7-13 2868685



MEN'S SNEAKER - BLACK

AVAILABLE FOR DELIVERY NOW

This sneaker provides a stable fit and protection. The Vibram® sole provides grip and abrasion resistance. The premium cow leather, antique silver eyelets and pinstripe design make this sneaker a favorite for riding and around town.

FEATURES

- 1.4-1.5 mm thick durable cow leather
- Gusset tongue keeps out sand & water
- Antibacterial microfiber insock & mesh lining
- Ankle protector, toe cap & heel cup
- Gear shift pad
- Includes black & red waxy shoe laces
- CE certified. Directive 89/686/EEC; EN 13634:2015

SIZE: 7-13 2863961



MEN'S CLASSIC MOC - BROWN

AVAILABLE FOR DELIVERY NOW

This 8-inch lifestyle moccasin boot is developed to provide a stable fit and protection with an ecru Vibram® sole. The premium cow leather, antique brass eyelets and all brown stitching make these boots a favorite for riding and being seen around town.

FEATURES

- 1.4-1.5 mm thick durable cow leather
- Gusset tongue & zipper keep out sand & water
- Goodyear welt construction, repairable outsole construction
- Antibacterial microfiber insock & mesh lining
- Ankle protector, toe cap & heel cup
- Gear shift pad
- Includes brown & ecru waxy shoe laces
- CE certified. Directive 89/686/EEC; EN 13634:2015

SIZE: 7-13 2863963



NEW
MEN'S SOCKS 3 PACK

AVAILABLE FOR DELIVERY NOW

Multi pack of branded Indian Motorcycle® socks. Each pack includes three colors; black, gray and navy.

ONE SIZE (US 7-13) 2868691



WHAT IS A GOODYEAR WELT?

The Goodyear welting machine, invented in 1869, attaches the sole to a strip of leather, or welt, that runs around the outside of the shoe rather than the lining. Welting is a manual and time-consuming process, but results in a more waterproof and longer lasting shoe.

NEED A REPAIR?

Nu Shoe® is the official cobbler for all Vibram® sole replacements.

www.nushoe.com/indian-boot-repair.html
Toll free number: 1-877-687-4631



MEN'S ENGINEER - BLACK

AVAILABLE FOR DELIVERY NOW

This 7.5-inch boot is an iconic short Engineer style with burnish suede back panel. It features an internal YKK® zipper for easy pull-on and a Vibram® sole to provide grip and abrasion resistance. The premium cow leather, original Indian Motorcycle® buckles and all black stitching will have you riding in style.

FEATURES

- 1.4-1.5 mm thick durable cow leather
- Strap & elastic gusset to adjust the fitting
- Antibacterial microfiber insock & mesh lining
- Ankle protector, toe cap & heel cup
- Goodyear welt construction, repairable outsole construction
- Gusset zipper keeps out sand & water
- CE certified. Directive 89/686/EEC; EN 13634:2015

SIZE: 7-13 2863962



WOMEN'S TALL ENGINEER - BROWN

AVAILABLE FOR DELIVERY NOW

This 13-inch boot is a casual tall Engineer style with burnish suede back panel. It features an internal YKK® zipper for easy opening, with heeled wooden sole and an elastic gusset to adjust the fitting.

FEATURES

- 1.4-1.5 mm thick durable cow leather
- Strap & elastic gusset to adjust the fitting
- Antibacterial microfiber insock & mesh lining
- Goodyear welt construction, repairable outsole construction
- Gusset zipper keeps out sand & water

SIZE: 5-11 2863964



MEN'S CLASSIC LACE UP - BLACK

AVAILABLE FOR DELIVERY NOW

This 8-inch classic lace up boot is developed to provide a stable fit and protection, it has a Vibram® sole to provide grip and abrasion resistance. The premium cow leather, antique silver eyelets and all black stitching make these boots a favorite for riding and being seen around town.

FEATURES

- 1.4-1.5 mm thick durable cow leather
- Gusset tongue keeps out sand & water
- Goodyear welt construction, repairable outsole construction
- Antibacterial microfiber insock & mesh lining
- Ankle protector, toe cap & heel cup
- Certified slip resistance outsole
- Internal YKK® zipper for easy pull-on
- Includes black & mix combo colored waxy shoe laces
- CE certified. Directive 89/686/EEC; EN 13634:2015

SIZE: 7-13 2863960



WOMEN'S SHORT ENGINEER - BLACK

AVAILABLE FOR DELIVERY NOW

This 8-inch boot is a professional short Engineer style with burnish suede back panel. It features an internal YKK® zipper for easy pull-on. The premium cow leather, original Indian Motorcycle® buckles, embossed logo and all black stitching will have you riding in style.

FEATURES

- 1.4-1.5 mm thick durable cow leather
- Strap & elastic gusset to adjust the fitting
- Antibacterial microfiber insock & mesh lining
- Ankle protector, toe cap & heel cup
- Gear shift pad
- Goodyear welt construction, repairable outsole construction
- Gusset zipper keeps out sand & water
- CE certified. Directive 89/686/EEC; EN 13634:2015

SIZE: 5-11 2863978



MEN'S MESH HI-TOP SNEAKER
PAGE 36



MEN'S SNEAKER
PAGE 36



MEN'S WORTHINGTON BOOT

AVAILABLE FOR DELIVERY NOW

This boot is based on Red Wing Shoes' classic Engineer style and has been modified for Indian Motorcycle® riders. This 11-inch pull-on boot features plain toe styling, a Vibram® 430 sole to provide higher grip and abrasion resistance and an instep strap to adjust the fitting. The premium Red Wing Shoes® Black Harness leather, original Indian Motorcycle® buckles, embossed logo and all black stitching will have you riding in style. These boots feature Goodyear welt construction and puritan chain stitching.

FEATURES

2.0-2.2 mm thick durable Red Wing® work boots leather
Instep strap to adjust the fitting
Leather Insole
Traditional Engineer style from 1930s
Original Indian Motorcycle® logo buckles
Goodyear welt construction, repairable outsole construction

SIZE: 7-13 2864411



MADE IN
★ ★ ★ ★ ★
U.S.A.
★ ★ ★ ★ ★



MEN'S SPIRIT LAKE BOOT

AVAILABLE FOR DELIVERY NOW

This boot is based on Red Wing Shoes' popular Iron Ranger and has been modified for Indian Motorcycle® riders. It is an 8-inch boot developed to provide a stable fit and ankle protection, has a Vibram® 430 sole to provide higher grip and abrasion resistance and features a double layer leather toe cap for protection. The premium Red Wing Shoes® Amber Portage leather, gunmetal eyelets and all brown stitching make these boots a favorite for riding and being seen around town. These boots feature Goodyear welt construction and triple stitched quality.

FEATURES

2.0 – 2.2 mm thick durable Red Wing® work boots leather
Double layer capped toe to protect the toe area
Gusset tongue to prevent sand or water from getting into the boots
Leather insole
Goodyear welt construction, repairable outsole construction

SIZE: 7-13 2864412



MADE IN
★ ★ ★ ★ ★
U.S.A.
★ ★ ★ ★ ★



WOMEN'S CONNELLY BOOT

AVAILABLE FOR DELIVERY NOW

This boot is based on Red Wing Shoes' Engineer boot and has been updated for Indian Motorcycle® riders. This 11-inch pull-on boot features plain toe styling, Heeled Oil Resistant Cushion Crepe sole to provide grip and lighter weight and an instep strap to adjust the fit. The premium Red Wing Shoes® Black Harness leather, original Indian Motorcycle® buckles, embossed logo and white stitching deliver the best of fashion and function. These boots feature Goodyear welt construction and puritan chain stitching.

FEATURES

2.0-2.2 mm thick durable Red Wing® work boots leather
Instep strap to adjust the fit
Footbed insole to provide initial comfort
Traditional Engineer style from 1930s
Original Indian Motorcycle® logo buckles
Goodyear welt construction, repairable outsole construction

SIZE: 5-10 2864413



MADE IN
★ ★ ★ ★ ★
U.S.A.
★ ★ ★ ★ ★



LONG SLEEVE WRECKING CREW TEE
PAGE 46



BOMBER GIRL SHIRT
PAGE 55



MADE IN
U.S.A

NEW
IMC CRAFTSMANSHIP TEE

Made in California, these tees use a heavy weighted cotton single jersey. The logo is printed with water based and discharge inks to give a vintage look.

Fabric: 100% cotton single jersey
Graphics: Large distressed print on front;
small distressed logo on back

S-3XL 2868814



MADE IN
U.S.A

NEW
ORIGINAL BIKE TEE

Made in California, these tees use a heavy weighted cotton single jersey. The logo is printed with water based and discharge inks to give a vintage look.

Fabric: 100% cotton single jersey
Graphics: Large distressed print on front;
small distressed logo on back

S-3XL 2868815



LEGEND LIVES TEE

AVAILABLE FOR DELIVERY NOW

A long sleeved tee, with a large graphic printed across the back, celebrating the legendary Indian Motorcycle®. A small logo is printed on the front chest.

Fabric: 100% cotton single jersey
Graphics: Small logo print on front; large
distressed graphic on back

S-3XL 2867588



WALL OF DEATH TEE, PORT

AVAILABLE FOR DELIVERY NOW

This tee celebrates the daredevil exploits of the legendary Wall of Death riders and the Indian® Scout®. A large discharge print on the front shows the Scout® in action.

Fabric: 100% cotton single jersey
Graphics: Large distressed graphic on front; small
logo print at back neck; "Since 1901" at rear hem;
woven patch on right sleeve

S-3XL 2867564



IMC CIRCLE ICON TEE

AVAILABLE FOR DELIVERY NOW

This light gray tee features the Indian Motorcycle® circle icon headdress printed large across the chest in a distressed discharge print, and a small logo at the back neck.

Fabric: 100% cotton single jersey
Graphics: Large distressed print on front;
small logo on back neck

S-3XL 2867587



BE LEGENDARY TEE

AVAILABLE FOR DELIVERY NOW

This navy tee shows the Indian Motorcycle® icon logo printed large across the back, in a distressed discharge print. The Indian Motorcycle® logo is printed small on the chest.

Fabric: 100% cotton single jersey
Graphics: Small logo print on front; large
distressed icon print on back

S-3XL 2867589



NEW
SCOUT® REBORN TEE

Celebrate the comeback of the legendary Indian® Scout® with this tee. A large back graphic features the Indian® Scout®. And a small pocket and Indian Motorcycle® logo are located on the front chest.

Fabric: 100% cotton single jersey
Graphics: Distressed logo print on front; large distressed print on back; woven patch on right sleeve

S-3XL 2868816



FINAL SEASON

SCOUT® LOGO TEE, BLACK

AVAILABLE FOR DELIVERY NOW. FINAL SEASON

Indian® Scout® riders and enthusiasts will appreciate this simple black tee with bold Indian® Scout® branding. The front logo is in a puff print, for added effect.

Fabric: 100% cotton single jersey
Graphics: Puff print logo on front; small logo on back; woven patch on right sleeve

S-3XL 2863812



FINAL SEASON

SCOUT® LOGO TEE, RED

AVAILABLE FOR DELIVERY NOW. FINAL SEASON

Indian® Scout® riders and enthusiasts will appreciate this simple red tee with bold Indian® Scout® branding. The front logo is in a discharge print.

Fabric: 100% cotton single jersey
Graphics: Logo print on front and back; woven patch on right sleeve

S-3XL 2863816



LOGO TEES

AVAILABLE FOR DELIVERY NOW

Indian Motorcycle® logo tees are made with 100% pima cotton which is a superior cotton. The logos are printed with discharge and water based inks for a soft feel.

Fabric: 100% cotton single jersey
Graphics: Distressed Indian Motorcycle® logo on front; woven patch on right sleeve

S-5XL PART #: AT RIGHT



NEW
RED: 2868807
ANTIQUE WHITE: 2867945
ECRU (BLACK SHIRT): 2863317
BLUE: 2863745
GRAY MARL: 2863810



LONG SLEEVE LOGO TEE

AVAILABLE FOR DELIVERY NOW

A classic and simple long sleeve logo tee, in black cotton slub with a large Indian Motorcycle® logo printed on the front in a distressed discharge print, and a small logo at the back neck.

Fabric: 100% cotton slub jersey
Graphics: Distressed Indian Motorcycle® logo on front & back neck; "1901" embroidery at back hem

S-5XL 2866270



MADE IN

U.S.A

FINAL SEASON

1901 MOTOR OIL TEE

AVAILABLE FOR DELIVERY NOW. FINAL SEASON

This light gray tee is in a lightweight cotton slub jersey, and comes in a more fashionable fit than our other tees, with a slimmed down sleeve and shoulders. It has a large front graphic in a hand painted style, inspired by a vintage oil can. The finished tee has been given a vintage wash, to add to the relaxed and cool feel of the style.

Fabric: 100% cotton slub jersey
Graphics: Large hand painted style graphic on front
Fit: Men's Fashion Fit T-Shirt

S-2XL 2867666



MADE IN

U.S.A

FINAL SEASON

1901 WORLD'S FASTEST TEE

AVAILABLE FOR DELIVERY NOW. FINAL SEASON

This black tee is in a lightweight cotton slub jersey, and comes in a more fashionable fit than our other tees, with a slimmed down sleeve and shoulders. It has a large front graphic in a hand painted style, featuring a vintage Scout® design. The finished tee has been given a vintage wash, to add to the relaxed and cool feel of the style.

Fabric: 100% cotton slub jersey
Graphics: Large hand painted style graphic on front
Fit: Men's Fashion Fit T-Shirt

S-2XL 2867667



MADE IN

U.S.A

FINAL SEASON

1901 GRAND NATIONAL TEE

AVAILABLE FOR DELIVERY NOW. FINAL SEASON

This dark red tee is in a lightweight cotton slub jersey, and comes in a more fashionable fit than our other tees, with a slimmed down sleeve and shoulders. The finished tee has been given a vintage wash, to add to the relaxed and cool feel of the style.

Fabric: 100% cotton slub jersey
Graphics: Large hand painted style graphic on front
Fit: Men's Fashion Fit T-Shirt

S-2XL 2867665



MADE IN

U.S.A

FINAL SEASON

1901 FACTORY TEAM TEE

AVAILABLE FOR DELIVERY NOW. FINAL SEASON

This navy tee is in a lightweight cotton slub jersey, and comes in a more fashionable fit than our other tees, with a slimmed down sleeve and shoulders. The finished tee has been given a vintage wash, to add to the relaxed and cool feel of the style.

Fabric: 100% cotton slub jersey
Graphics: Large hand painted style graphic on front
Fit: Men's Fashion Fit T-Shirt

S-2XL 2867664

INDIAN MOTORCYCLE® 1901
FASHION FIT TEES

These shirts form part of the Indian Motorcycle® 1901 collection. These tees fit closer to the body than other styles with a slimmer chest, waist and shoulder giving a comfortable, sleek and fashionable silhouette. Reference the size chart on page 5 for more details on the fit.



Indian
MOTORCYCLE RACING



NEW
WRECKING CREW TEE

AVAILABLE FOR DELIVERY IN OCTOBER

A short sleeved tee with large applique on the front and back, and contrasting sleeves.

Fabric: 100% cotton slub jersey
Graphics: Embroidery & applique on front & back

S-3XL 2868860



NEW
LONG SLEEVE WRECKING CREW TEE

AVAILABLE FOR DELIVERY IN OCTOBER

A long sleeved tee with large applique on the front and back, and contrasting sleeves.

Fabric: 100% cotton slub jersey
Graphics: Embroidery & applique on front & back; faux leather patch on right sleeve; stitched on stripes on sleeves

S-3XL 2868819



NEW
WRECKING CREW SWEAT

AVAILABLE FOR DELIVERY IN OCTOBER

This pullover sweat has a front quarter zip and contrasting colored sleeves. Large applique graphics are applied to the front and back.

Fabric: 70% cotton, 30% polyester loop back
Graphics: Felt applique on front & back; faux leather patch on front hem; branded zipper

S-3XL 2868818



NEW
WRECKING CREW TEE, PORT

AVAILABLE FOR DELIVERY IN OCTOBER

This dark red tee has a large front graphic based around the 'Wrecking Crew' racing team.

Fabric: 100% cotton single jersey
Graphics: Large distressed print on front; small racing logo on back; "Since 1901" embroidered on back hem; woven patch on right sleeve

S-3XL 2868817



FLAT TRACK RACER TEE

AVAILABLE FOR DELIVERY NOW

This raglan tee has a large distressed front graphic, celebrating Indian Motorcycle's return to Flat Track Racing.

Fabric: 100% cotton slub jersey
Graphics: Large distressed flat track print on front; small logo at back neck; woven patch on right sleeve

S-3XL 2867563



NEW
RACING SHIRT

AVAILABLE FOR DELIVERY IN OCTOBER

Our IMC Racing official team jersey. A short sleeve racing shirt, with all over sublimation print.

Fabric: 100% polyester
Graphics: Full sublimation print

S-3XL 2868866





BONNEVILLE SCRIPT TEE
PAGE 51



HEADRESS LOGO TEE

AVAILABLE FOR DELIVERY NOW

This simple tee comes in navy, and features the Indian Motorcycle® headdress across the front, in light gray.

Fabric: 100% cotton single jersey
Graphics: Large distressed headdress print on front; woven patch on right sleeve

S-3XL 2867592



NEW

LONG SLEEVE HEADRESS TEE

This tee features 2 in 1 sleeves, with a contrasting long sleeve under the short sleeve for a layered look. The Indian Motorcycle® headdress is printed in full color across the front.

Fabric: 100% cotton slub jersey
Graphics: Large distressed headdress print on front; small logo print on back; "Since 1901" embroidered on back hem; woven patch on right sleeve

S-3XL 2868808



MOTORCYCLE RACING TEE

AVAILABLE FOR DELIVERY NOW

A black tee featuring a large Indian Motorcycle® racing logo across the back, and a small logo at the front chest.

Fabric: 100% cotton single jersey
Graphics: Small logo print on front; large distressed racing logo print on back; woven label on right sleeve

S-3XL 2867562



FINAL SEASON

IMC IG BLACK TEE

AVAILABLE FOR DELIVERY NOW. FINAL SEASON

A black slub tee, featuring a large distressed discharge print graphic on the front.

Fabric: 100% cotton slub
Graphics: Large distressed print on front, small print at back neck; small "Since 1901" embroidery at back hem

S-3XL 2866271



SUPERIOR TEE

AVAILABLE FOR DELIVERY NOW

An Indian Motorcycle® red tee, with a large distressed back graphic featuring the Indian® Scout® bike. This tee celebrates the superior quality of Indian Motorcycle®.

Fabric: 100% cotton single jersey
Graphics: Small distressed logo on front; large distressed graphic on back; "Since 1901" embroidered at rear hem; woven patch on right sleeve

S-3XL 2867591



THUNDER STROKE® TEE

AVAILABLE FOR DELIVERY NOW

This tee celebrates the powerful Thunder Stroke® 111 engine, with a large logo at the front, and a large Thunder Stroke® 111 graphic on the back.

Fabric: 100% cotton single jersey
Graphics: Large Thunder Stroke® 111 print on front and back & left sleeve; woven patch on right sleeve

S-5XL
GRAY: 2867593
BLACK: 2863660



FINAL SEASON

BLACK LOGO TANK

AVAILABLE FOR DELIVERY NOW. FINAL SEASON

This sleeveless vest has Indian Motorcycle® branding printed on the front and back. And a small embroidery at the back hem.

Fabric: 100% cotton single jersey
Graphics: Large distressed Indian Motorcycle® logo on front; small distressed print at back neck; embroidered "Since 1901" at back hem

S-3XL 2867947



SLEEVELESS SCRIPT ICON TEE, BLACK

AVAILABLE FOR DELIVERY NOW

This comfortable sleeveless all-cotton tee has Indian Motorcycle® branding printed on the front and back and deep-cut armholes.

Fabric: 100% cotton single jersey
Graphics: Distressed logo print on front & back

S-5XL 2865172



FINAL SEASON

SLEEVELESS LOGO TEE

AVAILABLE FOR DELIVERY NOW. FINAL SEASON

This tee delivers classic sleeveless style and comfort with Indian Motorcycle® branding on the front and back.

Fabric: 100% cotton single jersey
Graphics: Logo print on front & back

S-3XL 2865173



NEW
BOMBER GIRL PRIDE TEE

Large front graphic featuring a retro styled pin-up girl.

Fabric: 100% cotton single jersey
Graphics: Distressed print on front; small distressed logo print on back; "Since 1901" embroidered at back hem; woven patch on right sleeve

S-3XL 2868809



NEW
LONG SLEEVE BOMBER GIRL PRIDE TEE

Large back graphic featuring a retro styled pin-up girl, and a large Indian Motorcycle® logo across the front chest and contrasting color sleeves for added style.

Fabric: 100% cotton single jersey
Graphics: Distressed print on front & back; "Since 1901" embroidered on back hem; woven patch on right sleeve

S-3XL 2868810



FINAL SEASON

183MPH LS TEE

AVAILABLE FOR DELIVERY NOW. FINAL SEASON

A long sleeved tee in red slub fabric. The front graphic celebrates the historic world record, broken on an Indian® motorcycle.

Fabric: 100% cotton slub jersey
Graphics: Large distressed print on front; small distressed logo on back; printed contrast stripes on sleeves; embroidered "Since 1901" at back hem; woven patch on right sleeve

S-3XL 2867949



FINAL SEASON

UV PROTECT LS TEE

AVAILABLE FOR DELIVERY NOW. FINAL SEASON

This long sleeved tee uses a bamboo charcoal coating to offer UV protection SPF50, along with thermal control, dry fast, and high wicking properties, to keep you cool and dry on those summer rides.

Fabric: 100% polyester
Graphics: Headdress logo at front chest, icon logo at back neck, script logo on both sleeves

S-3XL 2867946



FINAL SEASON

WORLD TEE

AVAILABLE FOR DELIVERY NOW. FINAL SEASON

This gray marl tee features the Indian Motorcycle® headdress logo on a bold new graphic.

Fabric: 100% cotton single jersey
Graphics: Large distressed print on front; small distressed logo on back; embroidered "Since 1901" at back hem; woven patch on right sleeve

S-3XL 2867948



NEW
BONNEVILLE SCRIPT TEE

This gray marl tee celebrates the record breaking achievement of Burt Munro, with a large front graphic featuring the Indian Motorcycle® headdress.

Fabric: 100% cotton single jersey
Graphics: Large distressed print on front; "B. Munro" embroidered at front hem; "Offerings to the God of Speed" printed on back hem; woven patch on right sleeve

S-3XL 2868811



NEW
MUNRO 1967 TEE

This Indian Motorcycle® red tee celebrates the record breaking achievement of Burt Munro, with a large front graphic featuring the Scout® Streamliner.

Fabric: 100% cotton single jersey
Graphics: Large distressed print on front; embroidered "B. Munro" on front hem; woven patch on right sleeve

S-3XL 2868812



NEW
MUNRO SPECIAL TEE

This long sleeved black tee celebrates the record breaking achievement of Burt Munro with a large back graphic. A small logo and pocket are at the front chest.

Fabric: 100% cotton single jersey
Graphics: Distressed print on front & back; embroidered "B. Munro" on right sleeve

S-3XL 2868813



IMC QUILTED HOODIE
AVAILABLE FOR DELIVERY NOW

Keep warm in this quilted hoodie. With the body quilted in goose down, and contrasting sleeves and hood in a fleece backed melange, this hoodie offers all-over warmth. An Indian Motorcycle® logo patch is at the front chest.

Fabric: Body: 80% polyester, 20% nylon
Sleeves & Hood: 100% polyester
Down: 90% goose down, 10% feather, fill power 800
Graphics: Branded patch on chest

S-3XL 2867567



IMC HOODIE
AVAILABLE FOR DELIVERY NOW

This pullover hoodie is made in a heavy fleece-backed fabric for added warmth. The front features the Indian Motorcycle® logo in applique, while the back features a large embroidered Indian Motorcycle® icon.

Fabric: 70% cotton, 30% polyester fleeceback
Graphics: Embroidered logo on front & back
Additional Features: Two hand warmer pockets; drawstring hood; contrasting stitching

S-3XL 2863697



ICON SCRIPT HOODIE
AVAILABLE FOR DELIVERY NOW

This soft, all-cotton hoodie features a winning combination of red, black, and ecru, and it has handwarmer pockets and a warm drawstring hood. There is embroidered Indian Motorcycle® branding on the front and back.

Fabric: 100% cotton loopback
Graphics: Embroidered logo on front & back
Additional Features: Two hand warmer pockets with snap closure; drawstring hood

S-3XL 2865194



LOGO QTR ZIP KNIT
AVAILABLE FOR DELIVERY NOW

This quarter zip knit comes in a dark gray marl, and uses Indian Motorcycle® branding on the front in black chain embroidery, for a subtle look.

Fabric: 100% cotton knit
Graphics: Large embroidered logo on front; "Single 1901" embroidered on back neck; leather-look patch on right sleeve

S-3XL 2867580



IMC CONTRAST ZIP THRU
AVAILABLE FOR DELIVERY NOW

This contrasting zip-thru comes in light gray and dark gray marl. It features a large back applique/embroidery on the back in antique white, and a small embroidery at the front chest. Branded zip pulls are used, along with a leather-look patch at the front hem.

Fabric: 70% cotton, 30% polyester fleeceback
Graphics: Small embroidered logo on chest, large embroidered print on back; leather-look patch on front hem; embroidered patch on right sleeve

S-3XL 2867566



FINAL SEASON
QUARTER ZIP FLEECE
AVAILABLE FOR DELIVERY NOW. FINAL SEASON

A classic and comfortable black fleece, with quarter zip at neck and Indian Motorcycle® branding.

Fabric: 100% polyester fleece
Graphics: Embroidered logo on front & back

S-3XL 2866161



SCOUT® ZIP THRU
AVAILABLE FOR DELIVERY NOW

A zip thru for the proud Indian® Scout® rider. Sleeve patches and large back embroidery feature Scout® and Indian Motorcycle® branding.

Fabric: 80% cotton, 20% polyester sueded fleece
Graphics: Embroidered logo on front; embroidered and applique logo on back; woven patch on left and right sleeves

S-3XL 2867950



IMC GRAY SWEAT
AVAILABLE FOR DELIVERY NOW

This classic dark gray marl sweat features subtle Indian Motorcycle® branding across the front in dark gray applique and black embroidery. A small logo embroidery is placed at the back neck, and a leather patch is added to the front hem.

Fabric: 80% cotton, 20% polyester
Graphics: Large applique logo on front in felt and embroidery, small embroidered logo at back neck

S-3XL 2866274



WRECKING CREW SWEAT
PAGE 46



NEW
RED PLAID SHIRT

This soft plaid shirt features two front pockets and embroidered Indian Motorcycle® branding at the back neck. Leather-look patches are applied to the front hem and chest pocket. The buttons at the front fastening, pockets and cuffs are all branded.

Fabric: 100% cotton plaid
Graphics: Embroidered logo on back and front; leather-look patch on front; branded buttons

S-3XL **2868821**



NAVY PLAID SHIRT

AVAILABLE FOR DELIVERY NOW

This soft plaid shirt features two front pockets and embroidered Indian Motorcycle® logo at the back neck. Leather-look patches are applied to the front hem and chest pocket. The buttons at the front fastening, pockets, and cuffs are all branded.

Fabric: 100% cotton
Graphics: Embroidered logo at back neck; embroidered and applique logo on back; two leather-look patches on front; branded buttons

S-3XL **2867586**



PLAID GRAY SHIRT

AVAILABLE FOR DELIVERY NOW

This plaid shirt provides added warmth with its 100% cotton woven fabric. It features subtle Indian Motorcycle® branding with a small embroidery above the left front chest pocket and small leather patches at the left front pocket and front hem.

Fabric: 100% cotton
Graphics: Small Indian Motorcycle® logo embroidery on front; leather patch on front hem

S-3XL **2866275**



SHOP SHIRT, ANTIQUE WHITE

AVAILABLE FOR DELIVERY NOW

This shop-shirt comes in a lightweight cotton, to keep you cool and comfortable. It features a large Indian Motorcycle® print at the back, and patches on both sleeves.

Fabric: 100% cotton
Graphics: Embroidered logo on front; printed logo on back; woven patches on sleeves

S-3XL **2867953**



SHOP SHIRT, RED

AVAILABLE FOR DELIVERY NOW

This shop-shirt comes in a lightweight cotton, to keep you cool and comfortable. It features a large Indian Motorcycle® print at the back, and patches on both sleeves.

Fabric: 100% cotton
Graphics: Embroidered logo on front; printed logo on back; woven patches on sleeves

S-3XL **2867952**



COLOR BLOCK SHIRT

AVAILABLE FOR DELIVERY NOW

A classic flat collar bowling style shirt with color blocking in black, red and antique white. This shirt features strong Indian Motorcycle® branding, with a large back embroidery, two sleeve patches, and a small chest embroidery.

Fabric: 65% polyester, 35% cotton
Graphics: Embroidered logo on chest; large embroidered logo on back; branded patches on left & right sleeve

S-3XL **2866157**



KHAKI OVERSHIRT

AVAILABLE FOR DELIVERY NOW

This heavy herringbone overshirt features subtle Indian Motorcycle® embroidery. Dark brown cord at the inner neck and cuffs, along with a heavy vintage wash and leather look patches, add a cool, relaxed, feel.

Fabric: 100% cotton herringbone
Graphics: Embroidered logo on front; leather patch on sleeve & front; small "Since 1901" embroidery at back hem

S-3XL **2867951**



ICON DENIM SHIRT

AVAILABLE FOR DELIVERY NOW

This long sleeved denim shirt has a large back print, in navy. The chest pocket and the front hem feature branded leather-look labels. Branded buttons are used on front fastening, and cuffs.

Fabric: 100% cotton indigo denim
Graphics: Leather-look patches at front hem & chest pocket; large distressed print on back; branded buttons

S-3XL **2867565**



CASUAL SHIRT

AVAILABLE FOR DELIVERY NOW

Basic black with lots of style points including metal buttons on pockets and epaulets on this pit shirt.

Fabric: 65% polyester, 35% cotton
Graphics: Embroidered Indian Motorcycle® logo on front & back

S-5XL **2863698**



NEW
BOMBER GIRL SHIRT

A button up shirt in navy and black featuring a large retro-style pin up girl print on back. A faux leather patch, chest pocket and small logo print on front add extra style.

Fabric: 100% cotton herringbone
Graphics: Embroidered logo on front; "Since 1901" embroidered on sleeve; large bomber girl print on back

S-3XL **2868820**



SLEEVELESS CANVAS SHIRT

AVAILABLE FOR DELIVERY NOW

A sleeveless shirt in a woven cotton canvas. Embroidered logo on back and patch at chest.

Fabric: 100% cotton canvas
Graphics: Woven patch on chest; large embroidered logo on back; leather patch on front hem

S-3XL **2866158**



STUD SHOULDER TEE
PAGE 58



FRINGE TANK
PAGE 59



RED PLAID SHIRT
PAGE 64



DIAMOND ICON TEE
PAGE 59



NEW
STUD SHOULDER TEE

This black tee comes in a cotton/modal mix for a flattering fit. The raglan sleeves are covered in bronze studs and small logos are placed at the front hem and back neck in gold foil print.

Fabric: 50% cotton, 50% modal single jersey
Graphics: Stud detail on shoulders; small foil print logo on back
Fit: Relaxed Fit

XS-3XL 2868800



FRINGE TEE, BLACK

AVAILABLE FOR DELIVERY NOW

This black tee has fringe detailing at the sleeves, and bronze studs for a touch of bling. The Indian Motorcycle® logo is printed at the back neck in bronze foil print.

Fabric: 50% cotton, 50% modal
Graphics: Fringe & studs at armholes; foil printed logo at back neck
Fit: Relaxed Fit

XS-3XL 2867577



CHIFFON SLEEVE TEE

AVAILABLE FOR DELIVERY NOW

A stylish dark gray tee, with contrasting chiffon sleeves. The Indian Motorcycle® logo is printed across the chest in black.

Fabric: Body: 96% viscose, 4% spandex
Sleeves: 100% viscose chiffon
Graphics: Large printed logo on front
Fit: Relaxed Fit

XS-3XL 2867578



FINAL SEASON

ZIP TOP, GRAY

AVAILABLE FOR DELIVERY NOW. FINAL SEASON

A fashionable zip-front top in dark gray. Featuring a peplum hem, cinched in waist, and a deep V-neck, this fashionable style has subtle branding - with the Indian Motorcycle® logo at the back neck.

Fabric: 52% polyester, 48% rayon
Graphics: Small logo print on back neck
Fit: Fashion Fit. Elasticated waist with peplum hem

XS-3XL 2867959



FINAL SEASON

ORIGINAL TEE

AVAILABLE FOR DELIVERY NOW. FINAL SEASON

This Indian Motorcycle® Red tee has been given a heavy vintage wash for an authentic look. The front print features foil-print, studs, and sequins. This style comes in a lightweight jersey, with loose fit raglan sleeves and a deep V-neck, for a flattering fit.

Fabric: 50% cotton, 50% modal
Graphics: Large front print in foil with sequin & stud details
Fit: Relaxed Fit

XS-3XL 2867956



NEW
DIAMANTE ICON TEE

This short sleeved, navy slub tee comes in a comfortable relaxed fit, and is garment dyed which gives an inconsistent and faded look adding a vintage feel. The graphic features the headdress icon in glitter and foil print, and rhinestones for a hint of sparkle.

Fabric: 100% cotton single jersey
Graphics: Glitter & foil print with rhinestones on front; small foil print logo on back
Fit: Relaxed Fit

XS-3XL 2868795



LACE PANEL TEE

AVAILABLE FOR DELIVERY NOW

A soft navy long sleeved tee, with lace panelling at the front and back and the Indian Motorcycle® logo at the front chest. The sleeves have a inner tab and button, for the option of rolling up and wearing as 3/4 sleeve.

Fabric: 50% cotton, 46% modal, 4% spandex
Graphics: Front & back yoke panels in lace; small chest print
Fit: Close Fit

XS-3XL 2867568



LS BLACK CROSSOVER TEE

AVAILABLE FOR DELIVERY NOW

A long sleeved stretch tee, with crossover detail at the front, and gathered side panel for a flattering fit. A small Indian Motorcycle® logo is printed in a metallic silver at the front hem, and at the back neck in silver foil print with rhinestones.

Fabric: 100% rayon
Graphics: Small foil print on front hem, small foil print with rhinestones on back
Fit: Close Fit

XS-3XL 2867955



RAGLAN LACE TEE, BLACK

AVAILABLE FOR DELIVERY NOW

A stylish black tee with a deep V-neck, raglan sleeve, and lace trim at the neck-line. This style comes in a soft slub jersey, with a loose fit at the body and sleeves, to flatter every figure.

Fabric: 96% viscose, 4% spandex
Graphics: Logo print on back; lace detail around neck
Fit: Relaxed Fit

XS-3XL 2867960



QUALITY SWEAT, GRAY

AVAILABLE FOR DELIVERY NOW

This sweat comes in a light single jersey - perfect for layering over tee's and under zip-thrus. It has a heavy vintage wash and a shaped hem for a fashionable fit. Silver foil print, black glitter print, and rhinestones are used on the front print.

Fabric: 100% cotton single jersey
Graphics: Large foil print on front with black glitter & rhinestone detail; small logo print on back
Fit: Relaxed Fit

XS-3XL 2867957



NEW
IMC STUDS TANK

On this v-neck tank the fabric has been garment dyed, which gives an inconsistent and faded look adding a vintage feel. Foil prints in silver and gold, and metal studs are used on the front graphic.

Fabric: 100% cotton single jersey
Graphics: Large foil print with stud detail on front; small foil logo print on back
Fit: Relaxed Fit

XS-3XL 2868798



NEW
FRINGE TANK

This tank comes in a cotton/modal mix for a flattering fit. A simple black Indian Motorcycle® headdress is printed across the chest. Fringe detailing at the back gives this style a cool edge.

Fabric: 50% cotton, 50% modal
Graphics: Large printed logo on front; fringe detail on back
Fit: Relaxed Fit

XS-3XL 2868799



FINAL SEASON

HEADDRESS TANK

AVAILABLE FOR DELIVERY NOW. FINAL SEASON

The headdress tank comes in a flattering black ribbed fabric and a comfortable, relaxed fit. Classic Indian Motorcycle® headdress branding is printed on the front, in full color.

Fabric: 65% cotton, 35% rayon rib
Graphics: Distressed headdress print on front
Fit: Relaxed Fit

XS-3XL 2863763



HEADDRESS MARL TEE

AVAILABLE FOR DELIVERY NOW

This scoop neck tee comes in a stretch fabric, and is cut for a close fit to the body. A large distressed Indian Motorcycle® headdress is printed across the front in black.

Fabric: 95% cotton, 5% elastane stretch single jersey
Graphics: Large distressed headdress logo on front
Fit: Close Fit

XS-3XL 2866283



BLACK HEADDRESS TEE

AVAILABLE FOR DELIVERY NOW

This V-neck tee comes in a stretch fabric, and is cut for a close fit to the body. A large Indian Motorcycle® headdress is printed across the front, in a hand painted style.

Fabric: 95% cotton, 5% spandex stretch single jersey
Graphics: Distressed Indian Motorcycle® logo on front
Fit: Close Fit

XS-3XL 2867954



ECRU LOGO V-NECK TEE

AVAILABLE FOR DELIVERY NOW

This V-neck tee comes in a stretch fabric, and is cut for a close fit to the body. A large distressed Indian Motorcycle® logo is printed across the front.

Fabric: 95% cotton, 5% spandex stretch single jersey
Graphics: Distressed Indian Motorcycle® logo on the front; patch with graphics on the sleeve
Fit: Close Fit

XS-3XL 2863325



GRAY LOGO V-NECK TEE

AVAILABLE FOR DELIVERY NOW

This logo tee features a feminine V-neck and a relaxed fit. A distressed discharge print Indian Motorcycle® logo is printed across the front.

Fabric: 100% cotton single jersey
Graphics: Distressed logo print on front
Fit: Relaxed Fit

XS-3XL 2863759



SILVER SPARKLE TEE

AVAILABLE FOR DELIVERY NOW

This light gray tee fabric uses a silver foil print, for a subtle all over sparkle. The Indian Motorcycle® logo is printed across the chest in black glitter print.

Fabric: 65% polyester, 35% rayon single jersey
Graphics: Large glitter print logo on front; silver foil print speckles across fabric
Fit: Close Fit

XS-3XL 2867573



NEW

SEQUIN LOGO TEE

This long sleeved tee comes in a dark red marl and features the Indian Motorcycle® logo in sequins and print across the chest.

Fabric: 100% cotton single jersey
Graphics: Sequin & printed logo on front
Fit: Relaxed Fit

XS-3XL 2868803



FINAL SEASON

ICON TANK

AVAILABLE FOR DELIVERY NOW

This tank comes in a flattering ribbed fabric and a comfortable, relaxed fit. The Indian Motorcycle® icon is printed on the front in a white waterbased print.

Fabric: 65% polyester, 35% rayon rib
Graphics: Distressed icon print on front
Fit: Relaxed Fit

XS-3XL
BLACK: 2866286
MARL (GRAY): FINAL SEASON 2866285



LOGO CAMI, BLACK

AVAILABLE FOR DELIVERY NOW

This simple black cami is great for layering under your favorite tees and sweats. This style is cut for a fit close to the body, and has printed branding at both the back, and the front chest. Straps are adjustable for a perfect fit.

Fabric: 95% cotton, 5% spandex
Graphics: Distressed logo on front & back
Fit: Close Fit

XS-3XL 2867574



SCOOP NECK TEE, PINK

AVAILABLE FOR DELIVERY NOW

This scoop neck tee comes in a pink marl, with the Indian Motorcycle® logo printed across the front in distressed discharge print.

Fabric: 100% cotton single jersey
Graphics: Distressed logo on front
Fit: Relaxed Fit

XS-3XL 2867590



LOGO HENLEY, PINK

AVAILABLE FOR DELIVERY NOW

A pink marl long sleeved tee, with contrasting gray marl sleeves. The Indian Motorcycle® logo is printed large across the back, in antique white discharge print, and small on the front chest.

Fabric: 50% polyester, 38% cotton, 12% rayon
Graphics: Small Indian Motorcycle® logo on chest; large logo print on back
Fit: Relaxed Fit

XS-3XL 2867559



ICON HENLEY, PURPLE

AVAILABLE FOR DELIVERY NOW

A gray marl long sleeved tee, with contrasting purple marl sleeves. Branded graphics are printed on the back, and front chest, with the back print featuring purple rhinestones.

Fabric: 50% polyester, 38% cotton, 12% rayon
Graphics: Small Indian Motorcycle® logo on chest; large logo print on back with rhinestones
Fit: Relaxed Fit

XS-3XL 2867560



NEW
LONG SLEEVE WRECKING CREW TEE

AVAILABLE FOR DELIVERY IN OCTOBER

A long sleeved tee with large applique on the front and back, and contrasting sleeves.

Fabric: 100% cotton single jersey
Graphics: Large applique & embroidery on front & back; stitched on sleeve stripes
Fit: Close Fit

XS-3XL **2868804**



NEW
WRECKING CREW TEE

AVAILABLE FOR DELIVERY IN OCTOBER

A short sleeved tee with large applique on the front and back, and contrasting sleeves.

Fabric: 100% cotton single jersey
Graphics: Large applique & embroidery on front & back; stitched on sleeve stripes
Fit: Close Fit

XS-3XL **2868856**



LOGO LACE TANK

AVAILABLE FOR DELIVERY NOW

A super-soft tank with lace detail. The Indian Motorcycle® logo is printed across the front in distressed print.

Fabric: 50% cotton, 46% modal, 4% spandex
Graphics: Large distressed logo print on front; lace detail
Fit: Close Fit

XS-3XL
PURPLE: **2867575**
MARL: **2867576**



FINAL SEASON

STAR TEE

AVAILABLE FOR DELIVERY NOW. FINAL SEASON

A raglan sleeve tee in a lightweight slub, with contrast back in broderie anglais. This style comes in a comfortable relaxed fit and is garment dyed which gives an inconsistent and faded look, and adds to its vintage feel.

Fabric: Body & Sleeves: 100% cotton slub jersey;
Back: 60% cotton, 40% nylon broderie anglais
Graphics: Large metallic print on front; back panel in broderie anglais
Fit: Relaxed Fit

XS-3XL **2867668**



LOGO ZIP THRU

AVAILABLE FOR DELIVERY NOW

This cozy all cotton zip thru features antique white and navy contrasting panels in a knit finish. It has hand warmer pockets and Indian Motorcycle® branding on the front chest and back.

Fabric: 100% cotton knit
Graphics: Embroidered logo on front; embroidered & applique logo on back
Care: Fold, do not hang

XS-3XL 2865202



V-NECK RAGLAN HOODIE

AVAILABLE FOR DELIVERY NOW

This pullover hoodie offers a comfortable yet feminine fit, with a deep V-neck and pink contrasting sleeves and hood. The Indian Motorcycle® logo is across the front in applique & embroidery.

Fabric: 65% cotton, 35% polyester
Graphics: Applique & embroidered Indian Motorcycle® logo on front

XS-3XL 2866289



NEW
COLOR BLOCK SWEAT, PURPLE

This zip-up hoodie offers a feminine edge with contrasting sleeves and hood in purple. A large icon is discharge printed across the back, and a small logo is embroidered at the front chest. A vintage wash gives this sweater a 'softer' look.

Fabric: 70% cotton, 30% polyester fleeceback
Graphics: Discharge print on back; embroidered logo on chest

XS-3XL 2868806



COLOR BLOCK SHIRT

AVAILABLE FOR DELIVERY NOW

A classic flat collar bowling style shirt. With color blocking in black, Indian Motorcycle® red and antique white. This shirt features strong branding, with a large back embroidery, two sleeve patches, and a small chest embroidery.

Fabric: 65% polyester, 35% cotton
Graphics: Embroidered logo on front & back; branded patches on left and right sleeve

XS-3XL 2866156



CONTRAST ZIP THRU

AVAILABLE FOR DELIVERY NOW

Contrasting black and cream-colored panels are combined to create a chic, flattering look. There's a full-zip front, handwarmer pockets, and Indian Motorcycle® branding on the left front and back.

Fabric: 70% cotton, 30% polyester fleeceback
Graphics: Embroidered logo on front; embroidered and applique logo on back
Additional Features: Two zip-closure pockets; contrasting two-color stripes across shoulders & down the sleeves; snap collar closure

XS-3XL 2865205



FINAL SEASON
ZIP THRU

AVAILABLE FOR DELIVERY NOW. FINAL SEASON

This zip thru features bold Indian Motorcycle® branding, with a large applique and embroidered icon on the back, and a small chest logo. The fabric is a cotton/poly fleeceback, for added warmth.

Fabric: 70% cotton, 30% polyester fleeceback
Graphics: Embroidered logo on left front, embroidered & applique icon graphic on back
Additional Features: Two zip-closure pockets; contrasting two-color stripes across shoulders & down the sleeves; snap collar closure

XS-3XL 2863756



NEW
RED PLAID SHIRT

This red plaid shirt is a wardrobe staple. In a soft cotton, the sleeves are adjustable and can be worn 3/4 length or full length. The Indian Motorcycle® logo is embroidered large across the back, and small on the front chest. This shirt comes in a slim, flattering fit.

Fabric: 100% cotton plaid
Graphics: Embroidered logo on front & back
Additional Features: Branded buttons; faux leather patch on chest pocket
Fit: Close Fit

XS-3XL 2868805



ICON SHIRT, BLACK

AVAILABLE FOR DELIVERY NOW

In a black stretch cotton, this shirt is a wardrobe staple for any Indian Motorcycle® fan.

Fabric: 98% cotton, 2% spandex
Graphics: Embroidered logo on front; large woven patch on back
Fit: Close Fit

XS-3XL 2867958



NEW
LONG SLEEVE BODYSUIT 3 PACK

Your little riders can show their Indian Motorcycle® pride with this Long Sleeve Bodysuit 3 pack. They provide comfortable coverage and feature distinctive Indian Motorcycle® branding.

Fabric: 100% cotton single jersey
Graphics: Printed logo on front & back; 3 pack of navy, red & white

SIZE:	PART #:
3-6 MONTHS/ S	286880102
6-12 MONTHS/ M	286880103
12-18 MONTHS/ L	286880106



NEW
SHORT SLEEVE BODYSUIT 3 PACK

Your little riders can show their Indian Motorcycle® pride with this Short Sleeve Bodysuit 3 pack. They come in a lightweight fabric to keep your little one cool and feature distinctive Indian Motorcycle® branding.

Fabric: 100% cotton single jersey
Graphics: Printed logo on front & back; 3 pack of navy, red & white

SIZE:	PART #:
3-6 MONTHS/ S	286880202
6-12 MONTHS/ M	286880203
12-18 MONTHS/ L	286880206



NEW
LOGO TEES 2 PACK

Your little riders can show their Indian Motorcycle® pride with this short sleeve tee 2 pack. Featuring distinctive Indian Motorcycle® branding.

Fabric: 100% cotton single jersey
Graphics: Printed logo on front & back; 2 pack of navy & white

SIZE:	PART #:
2-3 YEARS/ XS	286886701
3-4 YEARS/ S	286886702
4-5 YEARS/ M	286886703
5-6 YEARS/ L	286886706



Tom's T's Inc., headquartered in Sturgis, SD, offers a selection of pre-approved designs that can be customized to dealer specific locations or are able to offer a full design service for a fully customized design. Full details, including template designs and how to create custom designs, along with ordering information, pricing and minimum quantities can be found at www.custompolarisapparel.com or you can contact Tom's T's directly:

Tom's T's Inc.
601 Lazelle Street | Sturgis, SD 57785 | (605) 347-6169

Signing In:

- Go to www.custompolarisapparel.com
- Select the brand (Indian Motorcycle®)
- Enter your username and password (new users must register)

Program Information:

For standard template designs, art approval will be sent within three business days from order submission. Your program pricing includes a maximum 4-color imprint for orders of 72+. Orders can be a combination of different styles provided that there is a minimum order of 24 shirts per style selected.

For custom designs, please allow up to two weeks for artwork development. This allows time for creative development and necessary revisions based on Dealer and Polaris® feedback. Your program pricing includes a maximum 4-color imprint for orders of 144+ or a maximum 6-color imprint for orders of 288+.

Credit card payment options include: Visa, Mastercard, and American Express.

Shipping cost is based on both your order size and dealer location. An actual shipping cost for your order will be provided near the end of the checkout process.

Your order will ship within 10 business days following art approval. Allow an additional 1-6 business days for shipping transit time to your location.



Blueprint Apparel Co. is committed to providing each dealer with the best customer experience possible. Our commitment begins with an industry leading production facility and quality management system that has been certified ISO 9001. It continues by providing you with quality custom apparel and merchandise designed to specifications and delivered on time.

Placing Your Order

- Go to www.indianvictorydealermerchandise.com
- Click on “SHOP NOW”
- Enter your dealership number and password

ADULT T-SHIRTS

Template Back Design

The minimum order quantity for template back design is 72 t-shirts. You can mix and match any quantity of our in-stock front designs to go with your template back design. Then choose the desired quantity of each shirt and click “add to cart”.

Custom Back Design

The minimum total order quantity for custom designs is 144 t-shirts. You can mix and match any quantity of the in-stock front designs to go with your custom back or select a completely custom shirt – front and back. Then choose the desired quantity of each shirt and click “add to cart.”

Lead-Time for Apparel Orders

1. **Artwork Development**
 - **Template Design Back:** allow 5 business days from receipt of your order.
 - **Custom Design Back:** allow 10-15 business days from receipt of both your order and art request form.
2. **Production Lead-Time**
 - T-shirt orders will be shipped 10 business days following art approval by both the dealer and Polaris.

Contact Us:

We want to help make this the best experience possible.
Email: service@blueprintapparelco.com
Telephone: 1-800-299-8435





NEW
ICON SUNGLASSES

AVAILABLE FOR DELIVERY IN MARCH

Ride confident with our yellow lens sunglasses. The color negates oncoming headlights and make surroundings appear brighter in dull conditions. CE certified. Directive 89/686/EEC. Lens Filter Category 0.

Frame: Lightweight TR90 Nylon matte black frame
Lens: Yellow Polycarbonate lens
Additional features: 100% UVA+UVB protection, shatter-resistant, anti-fog coating, non-detachable EVA foam eyecup to reduce wind & peripheral light for a more comfortable ride.

ONE SIZE 2868696



NEW
SHADOW SUNGLASSES

AVAILABLE FOR DELIVERY IN MARCH

Be ride ready with the Shadow Sunglasses. Featuring a detachable EVA foam eye cup that is ideal for riding and casual use. CE certified. Directive 89/686/EEC. Lens Filter Category 3.

Frame: Lightweight TR90 Nylon glossy black frame with matte temple design
Lens: Gray Polycarbonate lens
Additional features: 100% UVA+UVB protection, shatter-resistant, anti-fog coating, detachable EVA foam eyecup to reduce wind and peripheral light for a more comfortable ride

ONE SIZE 2868846



ENTRY SUNGLASSES

AVAILABLE FOR DELIVERY NOW

These sunglasses are designed to be worn when riding and include an EVA foam eyecup to reduce wind and peripheral light. CE certified. Directive 89/686/EEC Lens Filter Category 3.

Frame: Lightweight TR90 Nylon matte black frame
Lens: Gray Polycarbonate lens
Additional features: 100% UVA+UVB protection, shatter-resistant, anti-fog coating, non-detachable EVA foam eyecup to reduce wind & peripheral light for a more comfortable ride.

ONE SIZE 2863996



NEW
LEGENDARY SUNGLASSES

AVAILABLE FOR DELIVERY IN MARCH

Be bold and legendary with these frames ideal for riding. CE certified. Directive 89/686/EEC. Lens Filter Category 3.

Frame: Lightweight TR90 Nylon glossy black & white patterned frame
Lens: Gray Polycarbonate lens
Additional features: 100% UVA+UVB protection, shatter resistant, anti-fog coating, non-detachable EVA foam eyecup to reduce wind and peripheral light for a more comfortable ride

ONE SIZE 2868697



NEW
SPIRIT SUNGLASSES

AVAILABLE FOR DELIVERY IN MARCH

Add a hint of color with these midnight blue framed sunglasses with rubber nose protector. CE certified. Directive 89/686/EEC Lens Filter Category 3.

Frame: Lightweight TR90 Nylon glossy dark blue frame
Lens: Gray Polycarbonate lens
Additional features: 100% UVA+UVB protection, shatter-resistant, anti-fog coating.

ONE SIZE 2868847



LIFESTYLE SUNGLASSES

AVAILABLE FOR DELIVERY NOW

The Lifestyle Sunglasses look great on or off the bike, made from lightweight polycarbonate frame and with a shatter resistant UVA/UVB lens. CE certified. Directive 89/686/EEC Lens Filter Category 3.

Frame: Lightweight Polycarbonate matte black frame
Lens: Brown Polycarbonate lens
Additional features: 100% UVA+UVB protection, shatter resistant, anti-fog coating. Prescription ready.

ONE SIZE 2863973



SEMI PRO SUNGLASSES

AVAILABLE FOR DELIVERY NOW

The Semi Pro sunglasses offer superior performance levels. Made from a lightweight and hard wearing nylon frame with a polycarbonate lens. CE certified. Directive 89/686/EEC Lens Filter Category 3. Impact Resistance Level 2.

Frame: Lightweight TR90 Nylon matte black frame
Lens: Gray Polycarbonate lens
Additional features: 100% UVA+UVB protection, shatter-resistant, detachable EVA foam eyecup. Prescription ready.

ONE SIZE 2864404



PERFORMANCE SUNGLASSES

AVAILABLE FOR DELIVERY NOW

The riders choice, the Performance Sunglasses offer a wide range of features for your riding needs. From the high quality, lightweight Rochflex frame to the quick reacting photochromic lens that changes from clear to gray depending on the light. The PU foam eye-cup offers superior wind and peripheral light protection. CE certified. Directive 89/686/EEC Lens Filter Category 1-3. Impact Resistance Level 2.

Frame: Quality lightweight RochFlex glossy black frame
Lens: Photochromic Eclipse Polycarbonate lens changes from clear to gray in 50 secs. Transition time is 60-90 secs.
Additional features: 100% UVA+UVB protection, shatter-resistant, anti-fog coating, detachable latex-free PU foam eyecup with sweat resistant patented rubber-seal on top of foam. Prescription ready.

ONE SIZE 2864405

SUNGLASSES DISPLAY

AVAILABLE FOR DELIVERY NOW

Display your sunglasses with this lockable display unit. Made of a wooden base and metal structured body, it is stable and safe to display your sunglasses. Fits up to 6 pairs of sunglasses and comes with two keys. No sunglasses included. Easy to assemble. Size: 8" (20 cm) W x 8" (20 cm) D x 24.5" (62 cm) H.

FITS 6 PAIRS 2867468



DRIFTER MESH JACKET
PAGE 12

INDIAN MOTORCYCLE® EYEWEAR

The Indian Motorcycle® eye-wear range has been developed to look great and also perform when riding. All styles are CE certified and have lightweight frames and shatter resistant lenses, which also include UVA/UVB filters, anti-fog coatings and are scratch resistant.

All styles, with the exception of the Spirit and Lifestyle Sunglasses, also include eye-cups that protect against wind and peripheral light when riding. The Performance Sunglasses have photo-chromic lenses that transition light to dark, depending on the light conditions, meaning they can be worn all day.

The Lifestyle, Semi-Pro and Performance sunglasses are also prescription ready. 7eye by Panoptx provides repair services and prescription lenses at additional cost. Please consult local laws regarding overseas made prescription lenses. For quotations, please contact 7eye by Panoptx USA at (001) 909-509-8228 or info@7eye.com



NEW // BIG SIZES

IMC FLEX FIT HAT
AVAILABLE FOR DELIVERY IN MARCH

Graphics: Rubber logo on front; woven patch on back
Features: Flat skip style available in two sizes

S/M	286869203
L/XL	286869206



NEW // BIG SIZES

INDIAN® SCRIPT FLEX FIT HAT
AVAILABLE FOR DELIVERY IN MARCH

Graphics: 3D rubber logo on front; woven patch on back
Features: Flat skip style available in two sizes

S/M	286869303
L/XL	286869306



HEADDRESS LOGO HAT
AVAILABLE FOR DELIVERY NOW

Graphics: Embroidered patch
Features: Adjustable plastic closure; flat skip style

ONE SIZE	2867609
----------	---------



TRUCKER

IMC TRUCKER HAT
AVAILABLE FOR DELIVERY NOW

Graphics: Embroidered logo on front; leather patch on side
Features: Adjustable plastic closure; mesh back

ONE SIZE	2864402
----------	---------



TRUCKER

SCOUT® TRUCKER HAT
AVAILABLE FOR DELIVERY NOW

Graphics: Woven Scout® patch
Features: Adjustable plastic closure; mesh back

ONE SIZE	2865229
----------	---------



// FINAL SEASON

5 PANEL SCOUT® HAT
AVAILABLE FOR DELIVERY NOW. FINAL SEASON

Graphics: Embroidered Scout® logo on front; "The Legend is Back" embroidered on back
Features: Adjustable plastic closure; monogram logos printed on lining

ONE SIZE	2865230
----------	---------



NEW

WASHED HEADDRESS HAT
AVAILABLE FOR DELIVERY IN MARCH

Graphics: Woven patch; "Since 1901" embroidered on back
Features: Adjustable leather strap

ONE SIZE	2868695
----------	---------



TRUCKER

NEW

CIRCLE ICON TRUCKER HAT
AVAILABLE FOR DELIVERY IN MARCH

Graphics: Embroidered logo
Features: Adjustable plastic closure

ONE SIZE	2868694
----------	---------



TRUCKER

QUALITY TRUCKER HAT
AVAILABLE FOR DELIVERY NOW

Graphics: Embroidered patch on front; embroidered "Since 1901" on back
Features: Adjustable plastic closure; mesh back

ONE SIZE	2862313
----------	---------



// FINAL SEASON

QUILT STITCH HAT
AVAILABLE FOR DELIVERY NOW. FINAL SEASON

Graphics: Embroidered logo on front & "Since 1901" on back
Features: Stretch headband; quilted front panels

ONE SIZE	2865231
----------	---------



CIRCLE PATCH HAT
AVAILABLE FOR DELIVERY NOW

Graphics: Embroidered icon graphic on front; graphic patch on the side
Features: Adjustable strap with metal clasp

ONE SIZE	2863628
----------	---------



ORIGINAL HAT
AVAILABLE FOR DELIVERY NOW

Graphics: Embroidered Indian Motorcycle® logo on front; printed logo on back
Features: Adjustable Velcro® closure

ONE SIZE	2863629
----------	---------



ESTABLISHED HAT
AVAILABLE FOR DELIVERY NOW

Graphics: Embroidered logo on front & side
Features: Adjustable leather strap

ONE SIZE	2864427
----------	---------



WAXED COTTON HAT
AVAILABLE FOR DELIVERY NOW

Graphics: Embroidered logo patch
Features: Adjustable leather strap

ONE SIZE	2864428
----------	---------



LEATHER PATCH HAT
AVAILABLE FOR DELIVERY NOW

Graphics: Leather icon logo patch
Features: Adjustable plastic closure

ONE SIZE	2863999
----------	---------



LOGO HAT
AVAILABLE FOR DELIVERY NOW

Graphics: Embroidered logo on front & back
Features: Stretch headband

ONE SIZE	2863631
----------	---------



// FINAL SEASON

GRAY LOGO HAT
AVAILABLE FOR DELIVERY NOW. FINAL SEASON

Graphics: Embroidered logo on front; screen printed logo on back
Features: Adjustable Velcro® closure

ONE SIZE	2863725
----------	---------





BLACK LOGO HAT
AVAILABLE FOR DELIVERY NOW

Graphics: Embroidered Indian Motorcycle® logo on front; screen printed logo on back
Features: Adjustable Velcro® closure

ONE SIZE 2863727



TRUCKER
FIRST HAT
AVAILABLE FOR DELIVERY NOW

Graphics: Embroidered headdress logo; tag on side
Features: Adjustable strap with metal clasp; mesh back

ONE SIZE 2863726



ARMY HAT
AVAILABLE FOR DELIVERY NOW

Graphics: Embroidered script logo
Features: Adjustable fabric strap with metal clasp

ONE SIZE 2863634



ICON HEAD WRAP
AVAILABLE FOR DELIVERY NOW

Embroidered patch logo at front and embroidered stitching at rear. Tie fasten back for close fit.

Graphics: Woven patch on front; embroidered script logo at rear
Features: Tie fasten

ONE SIZE 2867606



SCRIPT ICON SKULL WRAP
AVAILABLE FOR DELIVERY NOW

All over script logo print in tonal black. Elastic and tie at rear for a close fit.

Graphics: Felted patch on front; all over tonal black script logo print; embroidered script logo at rear
Features: Tie fasten

ONE SIZE 2867607



MULTIFUNCTIONAL HEADWEAR
AVAILABLE FOR DELIVERY NOW

Multifunctional stretchy headwrap with all over logo print. Wear it in your own style.

Graphics: Tiled logos
Features: Nine reference styles provided

ONE SIZE 2865233



BE LEGENDARY™ HEADBAND
AVAILABLE FOR DELIVERY NOW

Made of cotton with a discharge print. Elasticated rear band for close fit.

Graphics: Large distressed print
Features: Elastic band at rear for adjustability

ONE SIZE 2867605



HEAD TIE
AVAILABLE FOR DELIVERY NOW

This cotton head tie features large branding and an elasticized rear band for a comfortable fit. It also ties in the back.

Graphics: Discharge logo print
Features: Elastic band & tie fasten for adjustability

ONE SIZE 2865234



HEAD WRAP
AVAILABLE FOR DELIVERY NOW

This Head Wrap provides all-day comfort and classic rider style. Enhances comfort when worn inside a helmet. There are Indian Motorcycle® logos on the front and back, and an adjustable tie closure at the back.

Graphics: Printed script logo on front; headdress logo on back
Features: Tie fasten

ONE SIZE 2863844



SKULL WRAP
AVAILABLE FOR DELIVERY NOW

This Skull Wrap provides extra comfort in all conditions when it's worn inside a helmet. An elastic panel at the rear provides a comfortable fit for virtually every rider.

Graphics: Printed script logo on front; headdress logo on back
Features: Elastic band at back

ONE SIZE 2863845



BE LEGENDARY™ BANDANA
AVAILABLE FOR DELIVERY NOW

Two way bandana print - fold in half for two different styles as you wish. 23.6" (60cm) x 23.6" (60cm).

Graphics: Tiled script logo & large icon logo

ONE SIZE 2867608



INDIAN MOTORCYCLE® BANDANA
AVAILABLE FOR DELIVERY NOW

A soft, stylish bandana featuring a repeating pattern of branded graphics on a full-sized bandana that can be worn or used in many ways. 23.6" (60cm) x 23.6" (60cm).

Graphics: Printed script & headdress logos

ONE SIZE 2863846



COTTON LINEN SCARF
AVAILABLE FOR DELIVERY NOW

Unisex lightweight and comfortable scarf made of cotton and linen mix. It features the discharge print logo and the signature Indian Motorcycle® red and cream colors with wrinkle finishing. Size: 78.7" (200cm) x 19.7" (50cm).

Graphics: Indian Motorcycle® script logo

ONE SIZE 2864426



ICON FLEECE BEANIE
AVAILABLE FOR DELIVERY NOW

Debossed icon logo at side, embroidered logos on front and back, made of polyester fleece shell fabric and jersey lining.

Graphics: Embroidered logo, debossed graphics

ONE SIZE 2863997



ICON FLEECE NECK WARMER
AVAILABLE FOR DELIVERY NOW

Two debossed logos on sides, embroidered logos on front, made of polyester fleece shell fabric and jersey lining with elastic toggle.

Graphics: Embroidered logo, debossed graphics
Features: Toggle adjuster

ONE SIZE 2863998

INDIAN MOTORCYCLE® BAGS & LUGGAGE



NEW WAXED COTTON BACKPACK

This waxed cotton backpack is stylish and large enough to carry everything from a laptop to a rain suit and much more. This backpack features premium heavy-duty waxed cotton canvas with leather trim and adjustable shoulder straps. Additional features include; fleece-lined laptop pocket, magnet closing on pockets and durable brass zippers. Bag dimensions: 19" (48cm) high x 13.3" (34cm) wide x 6.5" (17cm) deep."

ONE SIZE 2868686



NEW WAXED COTTON DUFFLE BAG

This large duffle is durable and designed to carry a wide variety of gear. This bag features premium heavy-duty waxed cotton canvas with leather trim. The large main cargo space closes with a heavy-duty brass zipper. Bag dimensions: 12.5" (32cm) high x 20" (51cm) wide x 9.4" (24cm) deep.

ONE SIZE 2868687



NEW WAXED COTTON MESSENGER BAG

This durable messenger bag is large enough to carry most laptops with 15" displays. This bag features premium heavy-duty waxed cotton canvas, and leather trim. Comes with an adjustable shoulder strap, and multiple interior pockets. Fleece-lined laptop compartment. Bag dimensions: 11.8" (30cm) high x 15" (38.5cm) wide x 5.4" (14cm) deep.

ONE SIZE 2868688



NEW WAXED COTTON WASH BAG

A classic wash bag takes on extra style with Indian Motorcycle® branding. This durable waxed cotton canvas bag features embossed leather Indian Motorcycle® branding and branded zipper pull. This bag is lined and roomy enough to carry toiletries or be used to carry other small items. Bag dimensions: 7.5" (19cm) high x 16" (40cm) wide x 6" (15cm) deep.

ONE SIZE 2868690



NEW WAXED COTTON TOTE

This waxed cotton women's tote is a stylish and durable option made of a premium heavy-duty waxed cotton canvas with leather trim and adjustable shoulder straps. Additional features include; internal zip pocket, magnetic closing on pockets and flap, protective zip on main compartment using a durable brass zipper. Bag dimensions: 14" (36cm) high x 18" (4cm) wide x 6" (15cm) deep.

ONE SIZE 2868689



WOMEN'S CROSS BODY BAG

AVAILABLE FOR DELIVERY NOW

Here's a stylish and convenient way for women riders to carry small items such as their phone, keys, glasses, and more. This premium leather bag has an embossed Indian Motorcycle® logo on the flap and branded fabric lining. The flap closes securely with snap button, and the shoulder strap is adjustable and removable. This bag comes with a soft brushed-cotton drawstring bag, perfect for gift giving. Bag dimensions: 8.6" (22cm) wide x 7" (18cm) high x 3.1" (8cm) deep.

ONE SIZE 2863911

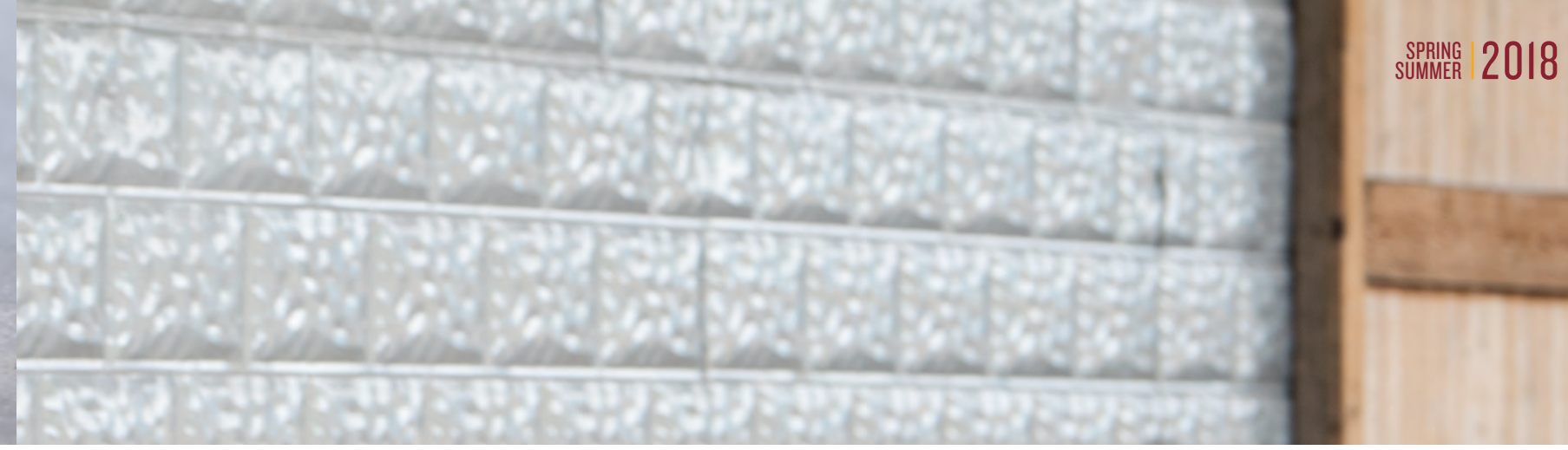


CABIN LUGGAGE

AVAILABLE FOR DELIVERY NOW

Savvy travelers will love the Indian Motorcycle® branded Cabin Luggage. It fits into standard airline overhead storage spaces and rolls easily on durable wheels. A retractable handle makes it easy to pull this bag, and there are two grab handles so the bag can be lifted from any direction. Multiple zippered storage spaces offer impressive cargo capacity. It has a heavy duty polyester shell fabric, polyester lining, and leather trim. 15" padded internal laptop compartment. Bag dimensions: 22" (56cm) high x 13.8" (35cm) wide x 9.8" (25cm) deep.

ONE SIZE 2863916



BI-FOLD WALLET, BLACK

AVAILABLE FOR DELIVERY NOW

This wallet features high quality leather, embossed brand logo and branded lining. 3.7" (9.5cm) high x 4.3" (11cm) wide.

ONE SIZE 2867600



BIKER CHAIN WALLET, BLACK

AVAILABLE FOR DELIVERY NOW

This wallet features high quality leather, embossed brand logo, branded lining, multiple compartments and a heavy metal chain. 3.7" (9.4cm) high x 7" (17.8cm) wide.

ONE SIZE 2867599



BI-FOLD WALLET

AVAILABLE FOR DELIVERY NOW

This premium leather Bi-Fold Wallet provides an efficient, secure, and stylish way to carry valuables. There's a long pocket for currency and several stacked slot pockets in which cards can be stored and remain visible for quick access. Features branded lining and embossed logo. 3.7" (9.5cm) high x 4.3" (11cm) wide.

ONE SIZE 2863853



TRI-FOLD WALLET

AVAILABLE FOR DELIVERY NOW

This premium leather Tri-Fold Wallet provides a spacious, efficient, secure, and stylish way to carry valuables. There's a long pocket for currency and several stacked slot pockets in which cards can be stored and remain visible for quick access. Features branded lining and embossed logo. 4.3" (11cm) high x 3.7" (9.5cm) wide.

ONE SIZE 2863854



LEATHER NOTEBOOK

AVAILABLE FOR DELIVERY NOW

The premium leather cover of this notebook has embossed branding on the front and back, a snap button closure, and cotton lining. Inside is a notebook of 50 sheets of branded paper, and the notebook comes in a gift box. 8.3" (21cm) high x 5.9" (15cm) wide.

ONE SIZE 2863913



NOTEBOOK REFILL, 2PK

AVAILABLE FOR DELIVERY NOW

These notebook refills can be used in the Leather Notebook or on their own. They feature premium-quality paper with an Indian Motorcycle® logo watermark. 7.5" (19cm) high x 5.2" (13.2cm) wide.

ONE SIZE 2863914



LEATHER FOB KEY CARRIER

AVAILABLE FOR DELIVERY NOW

Real leather pouch to carry your bike key FOB in style. Embossed lock and unlock detailing at the back so you don't have to remove the key to use. Magnetic snap fastener included. (Key FOB not included.) 5.5cm x 5.5cm

ONE SIZE 2867558



LEATHER LANYARD

AVAILABLE FOR DELIVERY NOW

This lanyard features a detachable snap buckle. Can use with Indian Motorcycle® Luggage Tag. 15.7" (40cm) long.

ONE SIZE 2863943

INDIAN MOTORCYCLE® MAN CAVE, GARAGE & OUTDOOR



P. 82



P. 83



INDIAN MOTORCYCLE® MAN CAVE, GARAGE & OUTDOOR



INDIAN MOTORCYCLE® PINT GLASS

AVAILABLE FOR DELIVERY NOW

Embossed tall pint glass. Dishwasher safe. 17.6oz. (500ml) Base: 2.7" (6.8cm) wide Top: 3.1" (7.9cm) wide x 9.6" (24.5cm) tall.

17.6 OZ 2867603



GLASS BEER MUG

AVAILABLE FOR DELIVERY NOW

Textured beer glass with Indian Motorcycle® logo decal. Dishwasher safe. 21oz. (610ml) 3.4" (8.7cm) wide x 6.3" (16cm) tall.

21 OZ 2867604



INDIAN MOTORCYCLE® SHOT GLASS

AVAILABLE FOR DELIVERY NOW

Set of 4 unique 2oz shot glasses. Dishwasher safe. Perfect for evening party with friends. Comes with stylish cylinder tin packaging. Great idea for a gift!

4 PACK 2863915



INDIAN MOTORCYCLE® EMBOSSED MUG

AVAILABLE FOR DELIVERY NOW

Embossed Indian Motorcycle® logo. Microwave & dishwasher safe. 17.6oz. (500ml) 3.5" (9cm) wide x 4.1" (10.4cm) tall.

17.6 OZ 2867601



LOGO BARREL MUG

AVAILABLE FOR DELIVERY NOW

Barrel shaped mug with a matte black finish. Microwave & dishwasher safe. 18.6oz. (530ml) 5.2" (13.3cm) wide x 4.3" (11cm) tall.

18.6 OZ 2867602



COASTERS

AVAILABLE FOR DELIVERY NOW

Enjoy your beverage while protecting your table or bar with Indian Motorcycle® metal tin coasters. Set includes six different tin coasters with cork bottoms. Size: 9cm diameter.

SET OF 6 2864418



2-IN-1 CORKSCREW & WINE STOPPER

AVAILABLE FOR DELIVERY NOW

Enjoy wine without the troubles of too many gadgets laying around. This 2-in-1 Corkscrew and Wine Stopper will serve all your needs. Keep it at home or carry on road trips. 2.8" (7cm) x 5.5" (14cm).

ONE SIZE 2863993



INDIAN MOTORCYCLE® BADGE LOGO BOTTLE OPENER

AVAILABLE FOR DELIVERY NOW

Pop tops in style with this premium metal Bottle Opener. It features a stylish design, efficient bottle opener, and red and silver Indian Motorcycle® logo. "2.4" (6cm) wide x 3.3" (8.5cm) tall.

ONE SIZE 2863952



INDIAN MOTORCYCLE® THUNDER STROKE® MUG

AVAILABLE FOR DELIVERY NOW

Dishwasher safe. Contrast rim color with Thunder Stroke® 111 and Indian Motorcycle® logo. Hard wearing travel accessory for road trips or the kitchen. 5.5" (14cm) wide x 3.5" (9cm) tall.

17 OZ 2863946



INDIAN MOTORCYCLE® SCOUT® MUG

AVAILABLE FOR DELIVERY NOW

Dishwasher safe. Contrast rim color with Indian Scout® logo. Hard wearing travel accessory for road trips or the kitchen. 5.5" (14cm) wide x 3.5" (9cm) tall.

17 OZ 2863947



INDIAN MOTORCYCLE® SLAP KOOZIE

AVAILABLE FOR DELIVERY NOW

Keep your beverage cool and your hands warm with the Indian Motorcycle® slap koozie. 9" (23cm) wide x 3.1" (8cm) tall.

ONE SIZE 2863959



HEDSTROM JACKET
PAGE 21

INDIAN MOTORCYCLE® POSTERS

Beautiful full-color front and side views of your bike. These great images are printed on high-quality 290gsm print paper measuring 24" (61cm) wide x 18" (45.7cm) tall, and the unframed print features an embossed Indian Motorcycle® logo. Each print is securely rolled in a black tube. Printed in the USA.

MADE IN
★★★★★
U.S.A
★★★★★



FINAL SEASON

SCOUT®

AVAILABLE FOR DELIVERY NOW. FINAL SEASON

24" x 18"

2863930



FINAL SEASON

DARK HORSE®

AVAILABLE FOR DELIVERY NOW. FINAL SEASON

24" x 18"

2863985



FINAL SEASON

CHIEF® CLASSIC

AVAILABLE FOR DELIVERY NOW. FINAL SEASON

24" x 18"

2863922



FINAL SEASON

CHIEF® VINTAGE

AVAILABLE FOR DELIVERY NOW. FINAL SEASON

24" x 18"

2863923



FINAL SEASON

CHIEFTAIN®

AVAILABLE FOR DELIVERY NOW. FINAL SEASON

24" x 18"

2863924



FINAL SEASON

ROADMASTER®

AVAILABLE FOR DELIVERY NOW. FINAL SEASON

24" x 18"

2863931



AMERICAN ICON CORRUGATED SIGN

AVAILABLE FOR DELIVERY NOW

This oversized corrugated metal sign will be an iconic piece in your collection. Featuring the American icon logo with antique brass overall print. UV & rust resistant. Suitable for indoor and outdoor. Size: 33"(83cm) wide x 28"(70cm) tall.

33" x 28"

2863976



ICON BARREL SIGN

AVAILABLE FOR DELIVERY NOW

This oversized barrel sign is made of 100% pine wood and will be an iconic piece in your bar. Diameter: 23.6" (60cm).

23.6" DIA.

2863990



FIRST MOTORCYCLE SIGN

AVAILABLE FOR DELIVERY NOW

Vintage inspired, this is an iconic sign with embossed effect on the logo. 15.7" (40cm) wide x 11.8" (30cm) tall.

15.7" x 11.8"

2864420



GENUINE PARTS & ACCESSORIES SIGN

AVAILABLE FOR DELIVERY NOW

Add this Genuine Parts & Accessories metal sign featuring the embossed headdress logo into your collection. 15.7" (40cm) wide x 11.8" (30cm) tall.

15.7" x 11.8"

2864421



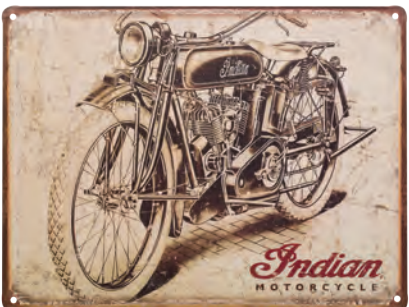
SCOUT® 45 SIGN

AVAILABLE FOR DELIVERY NOW

Go back to history with this Indian® Scout® 45 metal sign-The Police Special. "Motorcycling is the quickest transportation on the earth." 15.7" (40cm) wide x 11.8" (30cm) tall.

15.7" x 11.8"

2864422



ANTIQUE SIGN

AVAILABLE FOR DELIVERY NOW

Own a piece of historical Indian Motorcycle® marketing drawing with this Antique metal sign. 15.7" (40cm) wide x 11.8" (30cm) tall.

15.7" x 11.8"

2864425



1914 ENGINE SIGN

AVAILABLE FOR DELIVERY NOW

Fancy the sophisticated industrial drawings derived from the past? This 1914 Engine sign features the embossed effect on the engine. 11.8" (30cm) wide x 15.7" (40cm) tall.

11.8" x 15.7"

2864423



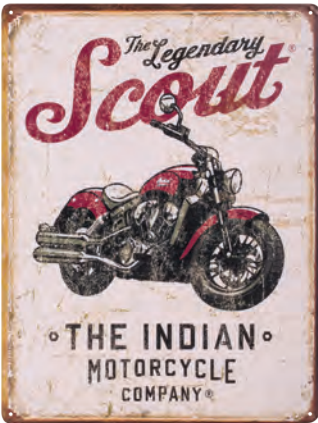
1920 DAYTONA RACER SIGN

AVAILABLE FOR DELIVERY NOW

This 1920 Daytona Racer metal sign will definitely arise your good old memories with its white rubber tires. 11.8" (30cm) wide x 15.7" (40cm) tall.

11.8" x 15.7"

2864424



SCOUT® MOTORCYCLE SIGN

AVAILABLE FOR DELIVERY NOW

Add this beautiful sign to your metal sign collection. Features the Indian Scout® in vintage graphics. 11.8" (30cm) wide x 15.7" (40cm) tall.

11.8" x 15.7"

2863975



MOTORCYCLE OIL SIGN

AVAILABLE FOR DELIVERY NOW

Add this beautiful Motorcycle Oil Sign to your metal sign collection. Features the Indian Motorcycle® oil can design. 11.8" (30cm) wide x 15.7" (40cm) tall.

11.8" x 15.7"

2863974



HOME RUG

AVAILABLE FOR DELIVERY NOW

Featuring the icon and headdress logos, this home rug will complete the total look of your man cave. Size: 76.8" (195cm) x 116.2" (295cm).

76.8" x 116.2" 2864417



WOOL THROW

AVAILABLE FOR DELIVERY NOW

This high quality, hardy and timeless woollen throw with iconic headdress logo will provide you with the comfort and warmth you need. Machine washable. Made in USA. Size: 80" (203cm) x 50" (127cm).

80" x 50" 2864414

MADE IN
★ ★ ★ ★ ★
U.S.A
★ ★ ★ ★ ★



CUSHION ORIGINAL

AVAILABLE FOR DELIVERY NOW

Made of 100% cotton canvas, this is a removable cushion cover with YKK® zipper closure. Cushion filling made of 100% high quality duck feather which provides maximum comfort on your couch. Both are machine washable. Size: 19.7" (50cm) x 19.7" (50cm).

19.7" x 19.7" 2863988



SPEEDOMETER WALL CLOCK

AVAILABLE FOR DELIVERY NOW

Design inspiration derived from the speedometer of Indian Motorcycles®. This matte black framed wall clock features speedometer graphics which deliver precise and accurate time. Diameter: 12" (30.4cm). Depth: 2.4" (6cm).

12" DIA. 2863992



LOGO BIKE MAT

AVAILABLE FOR DELIVERY NOW

This heavy-duty garage mat provides a clean, stylish surface on which motorcycles can be parked or a rider can kneel while doing maintenance, and a protective surface parts can be placed on during cleaning and maintenance. Mat is 103.9" (264cm) x 52.4" (133cm).

103.9" x 52.4" 2863879



INDIAN MOTORCYCLE® STANDARD TOP CHEST & ROLLER CABINET

AVAILABLE FOR DELIVERY NOW

Heavy-duty steel construction and high-gloss, black powder coat finish. Smooth operating ball bearing glides. Full-width, polished aluminum drawer pulls. Attractive chrome trim for a professional, finished appearance. Secure, tubular coded key locking system keeps tools safe. Iconic Ride cabinets feature 1947 Chief® image (Roller Cabinet only.)

INDIAN MOTORCYCLE® STANDARD TOP CHEST

PART #:	ITEM:
2830452	26" - 7 Drawer (shown)
2830454	41" - 8 Drawer (shown)

INDIAN MOTORCYCLE® ROLLER CABINET

PART #:	ITEM:
2830453	26" - 5 Drawer
2830455	41" - 11 Drawer
2830457	26" - 5 Drawer Iconic Ride (shown)
2830460	41" - 11 Drawer Iconic Ride (shown)



INDIAN MOTORCYCLE®
3 POSITION GARAGE CREEPER

AVAILABLE FOR DELIVERY NOW

Sturdy steel frame construction. Maximum 450 lb. working capacity. Easy-to-use snap locks secure creeper in three working positions. Ultra-low flat position is up to 2" lower than other creepers. Six full-bearing, oil-resistant, non-marking, solid PVC casters.

SIZE: ONE SIZE PART #: 2830456

INDIAN MOTORCYCLE®
MAGNETIC PARTS TRAY

AVAILABLE FOR DELIVERY NOW

Keeps nuts, bolts, fasteners and small tools within easy reach. Magnetic bottom sticks to any ferrous metal surface. Non-marring rubber covered base is safe on finished surfaces. Polished stainless steel won't rust, providing a long lasting finish.

SIZE: 4.25" DIA. PART #: 2830433



INDIAN MOTORCYCLE® LICENSED PRODUCTS

MEISSENBURG DESIGNS WOOD & METAL SIGNS

Meissenburg Designs creates distinctive hand crafted, Made in America wall decor. Indian Motorcycle® aficionados will appreciate the detail and design. These beautiful art pieces make great gifts for the motorcycle rider in your life.

Contact Meissenburg To Order:
sales@oldwoodsigns.com
meissenburgdesigns.com
406.837.3005, ext.307
11890 MT HWY 83 | Bigfork, MT, 59911





WINDOW DECAL - LARGE
AVAILABLE FOR DELIVERY NOW

Can trim to fit different sizes of rear truck window. Monogram logo background with headdress logo in the middle. Transparent from the inside of the truck, opaque outside. 66" (168cm) wide x 29" (74cm) tall.

66" x 29" 2863952



SCRIPT DECAL WHITE
AVAILABLE FOR DELIVERY NOW

You can decorate the rear window of your vehicle with this Indian Motorcycle® decal. 2 decals per pack. 5.5" (14cm) wide x 2" (5cm) tall.

5.5" x 2" 2863955



FINAL SEASON

WINDSHIELD DECAL

AVAILABLE FOR DELIVERY NOW. FINAL SEASON

Promote your Indian Motorcycle® spirit using this functional windshield decal at the front of your vehicle. 40.6" (103cm) wide x 3.3" (8.3cm) tall.

40.6" x 3.3" 2863956



LEATHER SNAP CUFF

AVAILABLE FOR DELIVERY NOW

Unisex fit, snap cuff featuring embossed logo. Adjustable wrist circumference with snap buttons. 1.8" (4.5cm) tall x 7-9" (18-23cm) circumference.

ADJUSTABLE SIZE 2863944



LEATHER BUCKLE CUFF

AVAILABLE FOR DELIVERY NOW

A must have item for your rider style. Chunky and quality leather cuff with adjustable leather straps. 2.8" (7cm) tall x 7-10.6" (18-27cm) circumference.

ADJUSTABLE SIZE 2863945



BROWN ICON HAIR ELASTIC

AVAILABLE FOR DELIVERY NOW

Tie your hair before you ride with this 100% leather Brown Icon Logo Hair Elastic. 2.4" (6cm) wide.

2.4" WIDE 2863980



DOUBLE SIDE STATIC CLING DECAL

AVAILABLE FOR DELIVERY NOW

This new double side static cling decal allows you to show off your preferred brand both inside and outside your vehicle. 5.9" (15cm) wide x 7.9" (20cm) tall.

5.9" x 7.9" 2863977

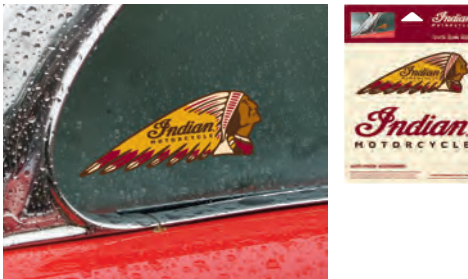


CLASSIC EMBLEM DECAL

AVAILABLE FOR DELIVERY NOW

Show off your Indian Motorcycle® spirit with icon logo on your vehicle window. 5.9" (15cm) wide x 7.9" (20cm) tall.

5.9" x 7.9" 2863953



STATIC CLING DECAL

AVAILABLE FOR DELIVERY NOW

Show off your Indian Motorcycle® spirit with the headdress & script logos on your vehicle window. 5.9" (15cm) wide x 7.9" (20cm) tall.

5.9" x 7.9" 2863954



BROWN SCRIPT HAIR ELASTIC

AVAILABLE FOR DELIVERY NOW

Tie your hair before you ride with this 100% leather Brown Script Logo Hair Elastic. 2.4" (6cm) wide.

2.4" WIDE 2863957



BLACK SCRIPT HAIR ELASTIC

AVAILABLE FOR DELIVERY NOW

Tie your hair before you ride with this 100% leather Black Script Logo Hair Elastic. 2.4" (6cm) wide.

2.4" WIDE 2863979



INDIAN SPORT SCOUT® 1:12 SCALE

AVAILABLE FOR DELIVERY NOW

Display the Indian Sport Scout® as a great conversation starter or reminder of the early days. Perfect for your desk or mantle.

1:12 SCALE 2863683



CAR AIR FRESHENER

AVAILABLE FOR DELIVERY NOW

Give the air a fragrant hint of Green Apple by hanging this 3" (7.5cm) wide air freshener in a vehicle, or other enclosed space. Each air freshener features the Indian Motorcycle® logo and has a string for hanging. Sold in packs of three air fresheners. Scent lasts 2-4 weeks.

3 PACK 2863921



MUNRO 1967 TEE
PAGE 51



BALLPOINT PEN - BLACK

AVAILABLE FOR DELIVERY NOW

High quality ballpoint pen with design details driven from the features of an Indian Motorcycle® engine. Each ballpoint pen comes with one black genuine Parker brand ink refill. Team with the other Indian Motorcycle® stationery products. Size: 5.5" (14cm).

5.5" 2863995

INDIAN® PARTS BAG (NOT PICTURED)

AVAILABLE FOR DELIVERY NOW

Medium: 15.5" (40cm) w x 17.5" (45cm) h
Large: 27.5" (70cm) w x 19.5" (50cm) h

MEDIUM 2863991

LARGE 2863994

CASUALWEAR HANGER (NOT PICTURED)

AVAILABLE FOR DELIVERY NOW

10 PACK 2863397

INDIAN MOTORCYCLE®
GIFTS & COLLECTIBLES

SPRING
SUMMER | 2018



MEN'S REVERSIBLE BELT

AVAILABLE FOR DELIVERY NOW

This Reversible Belt delivers outstanding versatility as it can be worn as a black or brown leather belt.

S-2XL

2863871



IMC LEATHER TEXTILE BELT

AVAILABLE FOR DELIVERY NOW

This leather textile belt is perfect for daily outings. Match with Indian Motorcycle® casualwear.

S-2XL

2863972



IMC BELT STRAP FOR BUCKLE

AVAILABLE FOR DELIVERY NOW

This handsome brown full-grain leather belt has an embossed Indian Motorcycle® logo across the back and branded buckle snaps.

S-2XL

2863971



EMBLEM BELT BUCKLE

AVAILABLE FOR DELIVERY NOW

This high-quality metal buckle features the Indian Motorcycle® emblem logo and is ready to use on any leather belt (not included). Buckle is 4" wide (10.2cm).

4" WIDE

2862296



MEN'S CIRCLE BUCKLE

AVAILABLE FOR DELIVERY NOW

This premium brass Circle Buckle features a multi-colored, enamel Indian Motorcycle® logo, and is ready for use with any leather belt (not included). Buckle diameter is 3.3" (8.5cm).

3.3" WIDE

2863822



MEN'S ESTABLISHED BUCKLE

AVAILABLE FOR DELIVERY NOW

This Established Belt Buckle features premium antique silver finish and it has a raised antique finish Indian Motorcycle® logo and "Established 1901" on the front. The buckle is ready for use with any leather belt (not included). Buckle width is 3.93" (10cm).

3.93" WIDE

2863823



KEY FOB, METAL

AVAILABLE FOR DELIVERY NOW

This handsome 100% metal alloy headdress logo key fob has a bottle opener and key ring. 3.1" (8cm) wide.

3.1" WIDE

2863336



SCOUT® LEATHER KEY RING

AVAILABLE FOR DELIVERY NOW

Functional key ring can be held in hand or hooked over belt to keep your keys safe. Embossed logo on both sides. 1.4" (3.5cm) wide x 5.1" (13cm) tall.

1.4" x 5.1"

2863969



INDIAN MOTORCYCLE®
LOGO PIN BADGE

AVAILABLE FOR DELIVERY NOW

1.2" WIDE

2863673



INDIAN MOTORCYCLE® COLORED
HEADDRESS PIN BADGE

AVAILABLE FOR DELIVERY NOW

1.6" WIDE

2863675



FINAL SEASON

IMC RUBBER KEY RING

AVAILABLE FOR DELIVERY NOW. FINAL SEASON

Retro motif IMC logo rubber key ring. Made with specialized machinery for defined cut out details on logo. 2.6" (6.5cm) wide x 3.9" (10cm) tall.

2.6" x 3.9"

2863981



ICON LEATHER KEY RING

AVAILABLE FOR DELIVERY NOW

Quality key ring featuring the embossed icon logo on both sides. Made with a special leather work technique. 2.2" (5.5cm) wide x 3.5" (9cm) tall.

2.2" x 3.5"

2863965



INDIAN MOTORCYCLE®
CIRCLE ICON PIN BADGE

AVAILABLE FOR DELIVERY NOW

1" WIDE

2863674



INDIAN MOTORCYCLE® BROWN
HEADDRESS PIN BADGE

AVAILABLE FOR DELIVERY NOW

1.6" WIDE

2863676



HEADDRESS RUBBER KEY RING

AVAILABLE FOR DELIVERY NOW

Iconic headdress rubber key ring. Made with specialized machinery for defined cut out details on logo. 1.2" (3cm) wide x 4.7" (12cm) tall.

1.2" x 4.7"

2863982



SCRIPT LEATHER KEY RING

AVAILABLE FOR DELIVERY NOW

Keep your keys safe with this modern key ring with script logo embossed on both sides. 1.2" (3cm) wide x 4.7" (12cm) tall.

1.2" x 4.7"

2863926



INDIAN MOTORCYCLE® PINS SHOWBOARD

AVAILABLE FOR DELIVERY NOW

Showcase the full Indian Motorcycle® pin line in your dealership. Display comes with all 4 pin styles, 69 total pins. 12.6" (32cm) high x 8.7" (22cm) wide. (For dealer use only.)

12.6" x 8.7"

2863677



SCOUT® SIXTY PATCH
AVAILABLE FOR DELIVERY NOW
4.5" WIDE 2867610



CHIEF DARK HORSE® PATCH
AVAILABLE FOR DELIVERY NOW
4.5" WIDE 2867611



CHIEF® CLASSIC PATCH
AVAILABLE FOR DELIVERY NOW
4.5" WIDE 2867612



FINAL SEASON
IMC BROWN LEATHER PATCH
AVAILABLE FOR DELIVERY NOW. FINAL SEASON
3.94" WIDE 2863986



HEADRESS LEATHER PATCH
AVAILABLE FOR DELIVERY NOW
3.35" WIDE 2863987



AMERICAN ICON PATCH
AVAILABLE FOR DELIVERY NOW
3.25" WIDE 2863949



CHIEF® VINTAGE PATCH
AVAILABLE FOR DELIVERY NOW
4.5" WIDE 2867613



CHIEFTAIN® PATCH
AVAILABLE FOR DELIVERY NOW
4.5" WIDE 2867614



CHIEFTAIN DARK HORSE® PATCH
AVAILABLE FOR DELIVERY NOW
4.5" WIDE 2867617



FINAL SEASON
IMC LEATHER PATCH
AVAILABLE FOR DELIVERY NOW. FINAL SEASON
4.5" WIDE 2863950



QUALITY LEATHER PATCH
AVAILABLE FOR DELIVERY NOW
4.25" WIDE 2863951



INDIAN MOTORCYCLE® PRIDE PATCH
AVAILABLE FOR DELIVERY NOW
3.1" WIDE 2863918



INDIAN SPRINGFIELD® PATCH
AVAILABLE FOR DELIVERY NOW
4.5" WIDE 2867616



ROADMASTER® PATCH
AVAILABLE FOR DELIVERY NOW
4.5" WIDE 2867615



FINAL SEASON
INDIAN MOTORCYCLE® SCOUT® PATCH, RED
AVAILABLE FOR DELIVERY NOW. FINAL SEASON
4.5" WIDE 2863920



FINAL SEASON
INDIAN MOTORCYCLE® THUNDER STROKE® PATCH
AVAILABLE FOR DELIVERY NOW. FINAL SEASON
4.1" WIDE 2863919



GRAPHIC STICKER SET
AVAILABLE FOR DELIVERY NOW
Brand everything from tool chests to laptops to car windows with graphics from your favorite motorcycle brand. Not suitable for motorcycle bodywork. 13.25" (34cm) high x 8.5" (22cm) wide.
13.25" x 8.5" 2863917



INDIAN MOTORCYCLE® STICKER SET
AVAILABLE FOR DELIVERY NOW
Add branding to items such as a car window, notebook, desktop, refrigerator and nearly any other surface. Not suitable for motorcycle bodywork. 13.25" (34cm) high x 8.5" (22cm) wide.
13.25" x 8.5" 2863865



INDIAN MOTORCYCLE® SCOUT® PATCH, BLACK
AVAILABLE FOR DELIVERY NOW
4.5" WIDE 2863928



CIRCLE ICON PATCH
AVAILABLE FOR DELIVERY NOW
3.1" WIDE 2863862



HEADRESS PATCH
AVAILABLE FOR DELIVERY NOW
COLORED: 4.5" WIDE 2863864
RED: 4.5" WIDE **FINAL SEASON** 2863863



LOGO PATCH
AVAILABLE FOR DELIVERY NOW
4.3" WIDE 2863861

KING BABY® STUDIO JEWELRY RANGE

The Indian® by King Baby® jewelry line has been developed for bikers and motorcycle enthusiasts alike. The collection features sterling silver bracelets, pendants, rings, wallet chains, money clips, belt buckles, and key rings. King Baby® is world renowned for creating some of the most unique, highly-detailed, and most sought after premium jewelry collections. The Indian® by King Baby® line is styled with the original aesthetic of Indian Motorcycle® and handcrafted in the USA with King Baby® quality and artistry. To order please contact King Baby® directly:

Ben Binder (Ben@kingbaby.com) or Landon Ludvigson (Landon@kingbaby.com)
KING BABY STUDIO
1621 12th Street | Santa Monica, CA 90404
Phone: 310-828-4438

View the collection at: kingbabystudio.com/collections/indian



NO RINSE WASH & SHINE

AVAILABLE FOR DELIVERY NOW

This is the fastest, easiest, and most environmentally friendly way to conveniently wash a motorcycle without rinsing. It cleans and protects the bodywork as it bonds to the surfaces and traps dirt to clean without rinsing.

SIZE:	PART #:
16 OZ/ 12PK	2863892
1 GAL/ 2PK	2863899



WHITE WALL & WHEEL CLEANER

AVAILABLE FOR DELIVERY NOW

This non-corrosive cleaner will safely dissolve and remove grease, oil, road dirt, and brake dust from motorcycle tires and wheels. It is excellent for use on white wall tires, and is a biodegradable cleaner that is safe for all wheels, such as chrome, aluminum, clear or powder-coated wheels.

SIZE:	PART #:
16 OZ/ 12PK	2863895
1 GAL/ 2PK	2863902



TRAVEL PACKS

AVAILABLE FOR DELIVERY NOW

A rider can keep an Indian Motorcycle® looking great while traveling by carrying this Travel Pack. It includes 4 oz. bottles of Bike Wash Concentrate, Spray & Wipe Instant Detailer, Liquid Spray Wax, and Leather, Vinyl & Rubber Conditioner, plus a plush microfiber towel.

SIZE:	PART #:
12PK	2863898



INSTANT DETAILER & SHINE

AVAILABLE FOR DELIVERY NOW

Detail in minutes with Instant Detailer and Shine. Spray it on a microfiber towel or directly on the bike to remove dirt and bugs. Use on windshields, bodywork and chrome. Safe for use on plexiglas, lexan, acrylic, or factory coated windshields.

SIZE:	PART #:
16 OZ/ 12PK	2863893
1 GAL/ 2PK	2863900



SPRAY WAX & PROTECTANT

AVAILABLE FOR DELIVERY NOW

Spray Wax and Protectant can be used on any clean surface, wet or dry, and it will produce a durable, high-gloss shine with minimal effort. It contains no petroleum distillates or silicone.

SIZE:	PART #:
16 OZ/ 12PK	2863896
1 GAL/ 2PK	2863903



ENGINE ENHANCER

AVAILABLE FOR DELIVERY NOW

Engine Enhancer is specially designed to preserve and restore the beauty of an engine and related parts. It provides a durable, factory finish without greasy or oily residue.

SIZE:	PART #:
16 OZ/ 12PK	2863894
1 GAL/ 2PK	2863901



SUPER PLUSH M/F TOWEL-TWIN PACK

AVAILABLE FOR DELIVERY NOW

The only towels a rider should use on a motorcycle, these 100% microfiber towels won't scratch any surface. They are extremely plush, can be used with chemicals and cleaners, and are machine washable. Sold in packs of two towels.

SIZE:	PART #:
TWIN PK/ 24PK	2863897



IMC TRUCKER HAT
PAGE 71

When you're enjoying your new Indian Motorcycle®, always wear a helmet and protective eyewear and clothing and insist that your passenger do the same. Ride within the limits of the law and your own abilities. Read and understand your owner's manual. Never ride under the influence of drugs or alcohol. Indian Motorcycle® strongly recommends that all riders take a Motorcycle Safety Foundation® Rider Course. For a course near you, call 1-800-446-9227. Protect riders' rights by joining the American Motorcyclist Association. For the name of your nearest Indian Motorcycle® dealership, call 1-800-POLARIS or visit our website at IndianMotorcycle.com. All riders are professionals and on a closed course. To the best knowledge of Polaris Industries Inc., the specifications, descriptions, and illustrative material contained herein are accurate as of the date this catalog was approved for printing. Indian Motorcycle® reserves the right, without prior notice, to discontinue at any time at its discretion any of the items herein or change specifications or designs without incurring any obligation to the customer. All items are subject to availability and prior sales by our dealers. Location photography by Todd Anderson, Scott Toepfer and Dean Bradshaw. Studio Photography by SAGA Marketing. Catalog design by SAGA Marketing. Printed in the USA.

Indian
MOTORCYCLE

Indian Motorcycle
2100 Highway 55, Medina, MN 55340
Phone: 763.542.0500 | Fax: 763.542.0599

Indian Motorcycle
50 Prairie Way
Winnipeg, Manitoba Canada R2J 3J8
Phone: 204.925.7100 | Fax: 204.925.7110

©2017 Indian Motorcycle®

Part #: 9930399



9930399

Indian Motorcycle® is a division of Polaris Industries Inc. Unless noted, trademarks are the property of Polaris Industries Inc. 3M® is a registered trademark of 3M Corporation. Cordura® is a registered trademark of Invista North America S.A.R.L. Corp. Luxembourg. Velcro® is a registered trademark of Velcro Industries B.V. Ltd Co. Netherlands. Bluetooth® is a registered trademark of Bluetooth SIG, Inc. YKK® is a registered trademark of YKK Corporation. Red Wing® and Red Wing Shoes® are registered trademarks of Red Wing Shoe Company, Inc. King Baby® is a registered trademark of MB&T Holdings, Inc. Jack Daniel's® is a registered trademark of Jack Daniel's. Vibram® is a registered trademark of Vibram S.P.A.

